



2522 Marshall Street NE
Minneapolis, Minnesota 55418-3329

612-746-4970
contacts@mwmoo.org

mwmoo.org

MISSISSIPPI
WATERSHED
MANAGEMENT
ORGANIZATION

AGENDA

Date: 09 July 2024

Attachment 2

Time: 3:00 PM

Location: 2522 Marshall Street NE, Minneapolis, MN 55418

Agenda

(D) — Signifies Decision Item

- 1) Welcome, Introduction of Commissioners and Roll Call
- 2) Approval of Agenda **(D)** Attachment 2
- 3) Approval of Minutes **(D)** Attachment 3
- 4) Consent Agenda **(D)** Attachment 4
- 5) Reports from Staff..... Attachment 5
- 6) General Business..... Attachment 6
 - a. 2024-021: Ramsey Boundary Change **(D)**..... Attachment 6.1
 - i. Changing Parcel List..... Attachment 6.1.1
 - ii. Mapbook Attachment 6.1.2
 - iii. Letter of Concurrence Attachment 6.1.3
 - b. 2024-022: Universal Plating Inc. Site LOI **(D)**..... Attachment 6.2
 - i. Letter of Intent for UPI Site..... Attachment 6.2.1
- 7) Board Updates and Announcements
- 8) Open Public Input (Non-Agenda Items)..... Sign-in Sheet
- 9) Adjourn **(D)**



2522 Marshall Street NE
Minneapolis, Minnesota 55418-3329
mwwmo.org

612-746-4970
contacts@mwwmo.org

**MISSISSIPPI
WATERSHED
MANAGEMENT
ORGANIZATION**

MEETING MINUTES

Date: 14 May 2024

Attachment 3

Time: 3:00 PM

Location: 2522 Marshall Street NE, Minneapolis, MN 55418

Attendance

Commissioners: Connie Buesgens, Columbia Heights and Hilltop; Tom Tillberry, Fridley; Jeff Dains, Lauderdale; LaTrisha Vetaw, Minneapolis (remote); Randy Stille, St. Anthony Village; and Michael Lukes, St. Paul.

Staff and Guests: Emmy Baskerville, Nick Busse, Kevin Reich, and Nancy Stowe, MWWMO; Glenda Meixell, Anoka Conservation District; and Amy Juntunen, JASS.

The meeting was called to order at 3:01 p.m. by Chair Stille.

Approval of Agenda

Motion by Dains, second by Buesgens to approve the agenda as presented. Motion carried unanimously.

Approval of Minutes

Motion by Tillberry, second by Dains to approve the minutes of the March 12, 2024 regular meeting minutes as presented. Motion carried unanimously.

Consent Agenda

Motion by Tillberry, second by Dains to approve the consent agenda as presented. Motion carried unanimously.

[Vetaw arrived 3:04 p.m.]

Reports from Staff

Reich provided an update on the extension of the Edison Green Campus onto the former Universal Plating site. While everything above ground has been cleaned up, MWMO is now looking into applying for an EPA loan/grant to cover the cost of pollution cleanup at the site. The eligibility review process takes up to three months. If the EPA loan/grant is not awarded, other funding sources will need to be found.

In January, the Board approved funding for a redesign of the MWMO website. The overhaul of the website is complete and includes a new project map color-coded by project type for all capital projects. Each project has a page starting with the key accomplishments of the project. Search functionality has also been improved, and links to the MWMO podcast, River of Ideas, are included. In June, an accessibility audit will be performed on the site to ensure the site is compatible with screen reading software and other accessibility tools. MWMO does not accept comments through the website. Comments can be sent to staff by email. Board noted that a history or timeline of capital projects would be helpful. MWMO staff still have ability to update page content regularly.

General Business

2024-017: MNL for North Columbia 2-Year Maintenance

This was a collaborative project between MWMO, City of Minneapolis and MPRB constructed in 2020-2021. Since construction, the BMPs on site have undergone an array of vegetation establishment work to install native habitat, remove invasive species, and manage soil health. Per the Construction Cooperative Agreement (CCA), MWMO is responsible for supporting an additional two years of vegetation work in 2024-2025 to complete the vegetation establishment period. Also, per the CCA, MWMO will hire the vegetation management contractor to conduct training for City and MPRB staff on vegetation management techniques in preparation for them to take over the long-term maintenance work.

Motion by Dains, second by Lukes to approve Resolution 2024-017 approving a professional services contract with Minnesota Native Landscapes, Inc. at a cost not to exceed \$120,000 to

provide two years of native vegetation management at Northern Columbia Golf Course BMPs. Motion carried unanimously.

2024-018: St. Boniface Catholic Parking Lot

This is a stormwater and habitat rehabilitation project in Northeast Minneapolis. This project received a Stewardship Grant in 2023 to explore water management options and create a concept design with the goal of managing excess stormwater that accumulates against the building and exploring opportunities to leverage the use of stormwater to expand a greenspace corridor, as well as an outreach component. This is a large, mainly impervious parking lot serving 180-200 families for church attendance, as well as the Northeast Farmers Market, so the area is already a community gathering space. The project would include a series of stormwater gardens/infiltration basins within the parking lot and a large L-shaped infiltration basin at the edge of the parking lot, as well as channel drains to direct water to the infiltration basins. The project also includes a swale between the church and residence buildings and three small stormwater gardens around the residence. This project includes a total of eight new infiltration basins and will reduce 324 lbs. of TSS per year and 1.78 lbs. of TP per year from the Mississippi. The project will also provide 6,400 square feet of native vegetation and habitat, including new trees at a showcase location with a large audience.

Motion by Buesgens, second by Tillberry to approve Resolution 2024-018 approving a Capital Project grant to St. Boniface Church for the construction of water quality and habitat features at the church campus in NE Minneapolis at a cost not-to-exceed \$260,000. Motion carried unanimously.

2024-019: Cordia Building Feasibility Study

This building is located in downtown Minneapolis and serves the downtown area with district electricity, producing steam, hot water and chilled water. The system uses 100-150 million gallons of water per year, with about 20% of that discharged through sanitary sewer. The feasibility study will look at runoff from the site as well as ways to use the excess water currently discharged through sanitary sewer. Potential projects include installing tree and green areas which may also reduce urban heat island effect, capture and treatment of runoff and harvesting excess water for reuse on-site or to refill water trucks for irrigating downtown parks.

Motion by Vetaw, second by Dains to approve Resolution 2024-019 approving funding for the Cordia Energy Building Feasibility Study at a cost not-to-exceed \$66,300. Motion carried unanimously.

2024-020: MWMO Building Security Upgrades

Staff is preparing to completely overhaul the current security system. Current video footage is grainy and such bad resolution it is impossible for police to use to verify the identity of any people causing issues on the property. New high-resolution cameras will be purchased for the parking lot and other trouble spots on the property. The new camera system will be supported by MWMO's current IT service, Metro INET. An annual fee will also be paid to Ehost the video service and server management. The building's access control system also needs upgrading as it is losing reliability. This will be done with new card readers at doors and an additional keypad to reduce false alarms. System upgrades will save MWMO \$3,300 per year by consolidating vendors.

Motion by Lukes, second by Buesgens to approve Resolution 2024-020 approving installation of video security system and door access control system upgrades at the MWMO facility at a cost not-to-exceed \$46,854. Motion carried unanimously.

Board Updates and Announcements

Lukes reported a successful cleanup event at Kasota Ponds on April 13. Around 50 people participated, collecting approximately 55 bags of trash with other miscellaneous items. Lukes also thanked MWMO staff who attended to share education and outreach about macroinvertebrates on site. Busse provided an educational video.

Buesgens asked if MWMO will be participating with the effort to monitor water quality on the Mississippi from its headwaters to the Iowa border this year. The MPCA is leading the monitoring effort and staff have reached out to let them know that MWMO has a boat and can assist with monitoring within its watershed.

The next meeting is scheduled for July 9, 2024.

Open Public Input

The Coon Rapids Senior Center will have a group touring the MWMO facility in July.

Adjourn

There being no further business the meeting was adjourned at 4:16 p.m.



MISSISSIPPI
WATERSHED
MANAGEMENT
ORGANIZATION

Request for Board Action

Attachment 5

Agenda Item: Staff Updates

Presenter: Various

Meeting Date: 9 July 2024 **Flexibility:** Yes No

Estimated Time: Consent Agenda 10 Min. 15 Min. 30 Min. 45 Min. 1 Hour

Action Request: Information/Review Motion to approve Budget Change Other

Board Action: Approved Denied Tabled Accepted Report Other

Date of Action: 9 July 2024

Background

Kevin Reich:

- Sullivan Lake Update

Zach Robinson:

- Spark Y Introduction

Emmy Baskerville-Doeckel:

- MWMO Green Roof Update Project Status

Nick Busse:

- 2026 Centennial Event Update

Dan Kalmon & Emily Resseger:

- From Stormwater to a Living Stream at Upper Harbor



MISSISSIPPI
WATERSHED
MANAGEMENT
ORGANIZATION

Request for Board Action

Attachment 6.1

Agenda Item: Letter of Concurrence for Watershed Boundary Change

Presenter: Nancy Stowe

Meeting Date: 09 July 2024

Flexibility: Yes No

Estimated Time: Consent Agenda 10 Min. 15 Min. 30 Min. 45 Min. 1 Hour

Action Request: Information/Review Motion to approve Budget Change Other

Board Action: Approved Denied Tabled Accepted Report Other

Date of Action: 09 July 2024

Background

Mississippi Watershed Management Organization (MWWMO) staff has reviewed and considered a proposal by Rice Creek Watershed District to change the common boundary between the Rice Creek Watershed District (RCWD) and the MWWMO within Ramsey County. Staff reviewed each parcel proposed for transfer, either from or to the jurisdictional boundary of the MWWMO, based on LiDAR elevation data, hydrologic delineations previously completed by the MWWMO, storm sewer infrastructure, and communications with member cities as appropriate. The hydrologic boundary between the RCWD and the MWWMO and the proposed adjustments to the jurisdictional boundary are shown in Attachments 1 and 2 (parcel list and mapbook).

MWWMO staff is requesting the Board to concur with its findings and the proposed petition submitted by the RCWD to change the common boundary between the RCWD and the MWWMO by means of the attached letter (Attachment 3).

Mississippi Watershed Management Organization

RESOLUTION 2024-021

A RESOLUTION APPROVING OF CONCURRENCE FOR WATERSHED DISTRICT BOUNDARY CHANGE/ADJUSTMENT

WHEREAS, Rice Creek Watershed District (“RCWD”) has analyzed and identified certain discrepancies in the common boundary between the Mississippi Watershed Management Organization (MWMO) and the RCWD. The discrepancies arise because of differences between the boundaries as established by State order and the hydrologic boundaries as determined by modern mapping information;

WHEREAS, RCWD has developed a revised boundary for inclusion in a petition to the Board of Water and Soil Resources for boundary change;

WHEREAS, RCWD has presented the revised boundary for consideration by the MWMO;

WHEREAS, Minnesota Statute 103B.215, requires a petition for boundary change to be accompanied by a written statement of concurrence in the petition from the governing body of each statutory or home rule charter city and town and each watershed management organization having jurisdiction over the territory proposed to be added or transferred; and

WHEREAS, RCWD has requested concurrence from the MWMO in the proposed boundary change and in the filing of a petition for boundary change with the Board of Water and Soil Resources that reflects the boundary changes described in the attached map and parcel listing;

NOW THEREFORE BE IT RESOLVED, the MWMO Board of Commissioners, in accordance with Minnesota Statute 103B.215, concurs with the proposed boundary changes found in the attached map and parcel listing, and authorizes its staff to execute the attached concurrence letter for inclusion with the RCWD petition to the Board of Water and Soil Resources for boundary change.

Adopted this the 9th day of July, 2024.

Review for the Board: _____

Randy Stille, Chair

Review for Administration: _____

Kevin Reich, Executive Director

MWMO-Changing Parcel List

PIN	Owner	Address	City	Old District	New District	Reasoning	Mapbook Page	Map ID
0602923210002	VERNEIL M BRANSTAD ET AL TRS	3532 BELDEN DR N E	Saint Anthony	Mississippi WMO	Rice Creek WSD	>50% drains to RCWD, hydro boundary change	6	1
0602923210003	R J & C J O'CONNELL	3528 BELDEN DR N E	Saint Anthony	Mississippi WMO	Rice Creek WSD	>50% drains to RCWD, hydro boundary change	6	2
0602923210004	GRANT M OLSON	3524 BELDEN DR	Saint Anthony	Mississippi WMO	Rice Creek WSD	>50% drains to RCWD, hydro boundary change	6	3
0602923210005	K W MILLER & R L MILLER	3520 BELDEN DR	Saint Anthony	Mississippi WMO	Rice Creek WSD	>50% drains to RCWD, hydro boundary change	6	4
0602923210006	J L & J M SCHRANDT	3516 BELDEN DR	Saint Anthony	Mississippi WMO	Rice Creek WSD	>50% drains to RCWD, hydro boundary change	6	5
0602923210007	RICHARD LUPIENT SUBJ/L E	3512 BELDEN DR	Saint Anthony	Mississippi WMO	Rice Creek WSD	>50% drains to RCWD, hydro boundary change	6	6
0602923210008	B S & C R S GULACHEK	3508 BELDEN DR	Saint Anthony	Mississippi WMO	Rice Creek WSD	>50% drains to RCWD, hydro boundary change	6	7
0602923210010	ZACHARY M SPEHAR	3505 COOLIDGE ST N E	Saint Anthony	Mississippi WMO	Rice Creek WSD	>50% drains to RCWD, hydro boundary change	6	8
0602923210011	ROBERT BOSSEN/DEANNA BOSSEN	3509 COOLIDGE ST N E	Saint Anthony	Mississippi WMO	Rice Creek WSD	>50% drains to RCWD, hydro boundary change	6	9
0602923210012	T G MCGRATH/S LAING MCGRATH	3513 COOLIDGE ST NE	Saint Anthony	Mississippi WMO	Rice Creek WSD	>50% drains to RCWD, hydro boundary change	6	10
0602923210013	DORMAN L FULTON & WIFE	3517 COOLIDGE ST N E	Saint Anthony	Mississippi WMO	Rice Creek WSD	>50% drains to RCWD, hydro boundary change	6	11
0602923210014	JAIIME DRIGGS/KELLY JOHNSON	3521 COOLIDGE ST N E	Saint Anthony	Mississippi WMO	Rice Creek WSD	>50% drains to RCWD, hydro boundary change	6	12
0602923210015	R F & B P MURRAY	3529 COOLIDGE ST NE	Saint Anthony	Mississippi WMO	Rice Creek WSD	>50% drains to RCWD, hydro boundary change	6	13
0602923210016	PETER CHAPUT	3537 COOLIDGE ST N E	Saint Anthony	Mississippi WMO	Rice Creek WSD	>50% drains to RCWD, hydro boundary change	6	14
0602923210017	P H JOHNSON & S K JOHNSON	2800 36TH AVE N E	Saint Anthony	Mississippi WMO	Rice Creek WSD	>50% drains to RCWD, hydro boundary change	6	15
0602923210091	JAMES H NIEMI/BRENDA S NIEMI	3541 HARDING ST N E	Saint Anthony	Mississippi WMO	Rice Creek WSD	>50% drains to RCWD, hydro boundary change	6	17
0602923210092	KIMBERLY HUNT/JEFFREY HUNT	3542 COOLIDGE ST NE	Saint Anthony	Mississippi WMO	Rice Creek WSD	>50% drains to RCWD, hydro boundary change	6	18
0602923210093	MARY KOZACZ	3537 HARDING ST N E	Saint Anthony	Mississippi WMO	Rice Creek WSD	>50% drains to RCWD, hydro boundary change	6	19
0602923210094	TAYE BIRMACHU	3538 COOLIDGE ST NE	Saint Anthony	Mississippi WMO	Rice Creek WSD	>50% drains to RCWD, hydro boundary change	6	20
0602923210095	ROBERT K MCDANIEL TRUSTEE	3529 HARDING ST N E	Saint Anthony	Mississippi WMO	Rice Creek WSD	>50% drains to RCWD, hydro boundary change	6	21
0602923210096	JOSEPH M GASIK ETAL	3530 COOLIDGE ST NE	Saint Anthony	Mississippi WMO	Rice Creek WSD	>50% drains to RCWD, hydro boundary change	6	22
0602923210099	S D LAING & E A LAING	3520 COOLIDGE ST NE	Saint Anthony	Mississippi WMO	Rice Creek WSD	>50% drains to RCWD, hydro boundary change	6	23
0602923210100	L WEINER & B WEINER	3516 COOLIDGE ST NE	Saint Anthony	Mississippi WMO	Rice Creek WSD	>50% drains to RCWD, hydro boundary change	6	24
0602923210101	D R HERNANDEZ JR/S M HERNAND	3519 HARDING ST N E	Saint Anthony	Mississippi WMO	Rice Creek WSD	>50% drains to RCWD, hydro boundary change	6	25
0602923210102	ROBERT ALVER & BONNIE ALVER	3512 COOLIDGE ST N E	Saint Anthony	Mississippi WMO	Rice Creek WSD	>50% drains to RCWD, hydro boundary change	6	26
0602923210103	SCOTT D BARTON	3515 HARDING ST N E	Saint Anthony	Mississippi WMO	Rice Creek WSD	>50% drains to RCWD, hydro boundary change	6	27
0602923210107	D W WIEHOFF ET AL SUBJ/L E	3508 COOLIDGE ST N E	Saint Anthony	Mississippi WMO	Rice Creek WSD	>50% drains to RCWD, hydro boundary change	6	28
0602923210108	ASSAAD Y HARK	2914 36TH AVE N E	Saint Anthony	Mississippi WMO	Rice Creek WSD	>50% drains to RCWD, hydro boundary change	6	29
0602923210109	HAYWARD WONG & RUTH WONG	2908 36TH AVE NE	Saint Anthony	Mississippi WMO	Rice Creek WSD	>50% drains to RCWD, hydro boundary change	6	30
0602923210110	BETTY J KIMINKI, ET AL	2902 36TH AVE N E	Saint Anthony	Mississippi WMO	Rice Creek WSD	>50% drains to RCWD, hydro boundary change	6	31
0602923210111	M J THUENTE & C G THUENTE	3535 BELDEN DR	Saint Anthony	Mississippi WMO	Rice Creek WSD	>50% drains to RCWD, hydro boundary change	6	32
0602923210113	G B MANNINEN & R P MANNINEN	3530 SILVER LAKE RD	Saint Anthony	Mississippi WMO	Rice Creek WSD	>50% drains to RCWD, hydro boundary change	6	33
0602923210114	D & P LYNCH	3521 BELDEN DR	Saint Anthony	Mississippi WMO	Rice Creek WSD	>50% drains to RCWD, hydro boundary change	6	34
0602923210115	MONTURY REV INTERVIV TRUST	3517 BELDEN DR	Saint Anthony	Mississippi WMO	Rice Creek WSD	>50% drains to RCWD, hydro boundary change	6	35
0602923210116	DANIEL & DAWN STAHLMANN	3524 SILVER LAKE RD	Saint Anthony	Mississippi WMO	Rice Creek WSD	>50% drains to RCWD, hydro boundary change	6	36
0602923210117	DANIEL & DAWN STAHLMANN	3524 SILVER LAKE RD	Saint Anthony	Mississippi WMO	Rice Creek WSD	>50% drains to RCWD, hydro boundary change	6	37
0602923210118	J NORTHWICK & S SEPPLA	3513 BELDEN DR	Saint Anthony	Mississippi WMO	Rice Creek WSD	>50% drains to RCWD, hydro boundary change	6	38
0602923210119	SARA J & JONATHAN A GONIA	3516 SILVER LAKE RD	Saint Anthony	Mississippi WMO	Rice Creek WSD	>50% drains to RCWD, hydro boundary change	6	39
0602923210148	NORDSON RENTALS LLC	3540 SILVER LAKE RD	Saint Anthony	Mississippi WMO	Rice Creek WSD	>50% drains to RCWD, hydro boundary change	6	41
0602923210149	HOMES BY WITT LLC	3536 SILVER LAKE RD	Saint Anthony	Mississippi WMO	Rice Creek WSD	>50% drains to RCWD, hydro boundary change	6	42
0602923210151	ASI HENNEPIN COUNTY INC	3512 SILVER LAKE RD	Saint Anthony	Mississippi WMO	Rice Creek WSD	>50% drains to RCWD, hydro boundary change	6	43
0602923210157	J L FREAS & K J FREAS	3523 HARDING ST N E	Saint Anthony	Mississippi WMO	Rice Creek WSD	>50% drains to RCWD, hydro boundary change	6	44
0602923220001	SCOTT R INGVALDSEN	3606 ROOSEVELT ST N E	Saint Anthony	Mississippi WMO	Rice Creek WSD	>50% drains to RCWD, hydro boundary change	5	45
0602923220002	NELSON REVOCABLE LIVING TR	3600 ROOSEVELT ST N E	Saint Anthony	Mississippi WMO	Rice Creek WSD	>50% drains to RCWD, hydro boundary change	5	46
0602923220004	JOHN B ELIASON TRUST	3540 ROOSEVELT ST N E	Saint Anthony	Mississippi WMO	Rice Creek WSD	>50% drains to RCWD, hydro boundary change	5	47
0602923220005	J C SOLEM & M H SOLEM	3636 ROOSEVELT ST N E	Saint Anthony	Mississippi WMO	Rice Creek WSD	>50% drains to RCWD, hydro boundary change	5	48
0602923220006	JAKE FULLER/LAURA LEUSCHEN	3532 ROOSEVELT ST N E	Saint Anthony	Mississippi WMO	Rice Creek WSD	>50% drains to RCWD, hydro boundary change	5	49
0602923220007	RAYMOND L STOPERA JR	3528 ROOSEVELT ST N E	Saint Anthony	Mississippi WMO	Rice Creek WSD	>50% drains to RCWD, hydro boundary change	5	50
0602923220008	JULENE R HAUG	3520 ROOSEVELT ST N E	Saint Anthony	Mississippi WMO	Rice Creek WSD	>50% drains to RCWD, hydro boundary change	5	51
0602923220019	JULIE ANN KITTELSON	3549 STINSON BLVD N E	Saint Anthony	Mississippi WMO	Rice Creek WSD	>50% drains to RCWD, hydro boundary change	5	52
0602923220020	C SALKOWICZ & F SALKOWICZ	3551 STINSON BLVD N E	Saint Anthony	Mississippi WMO	Rice Creek WSD	>50% drains to RCWD, hydro boundary change	5	53
0602923220021	M J FULLER & J L FULLER	3553 STINSON BLVD N E	Saint Anthony	Mississippi WMO	Rice Creek WSD	>50% drains to RCWD, hydro boundary change	5	54
0602923220022	MATTHEW KLING/KRISTI KLING	3555 STINSON BLVD N E	Saint Anthony	Mississippi WMO	Rice Creek WSD	>50% drains to RCWD, hydro boundary change	5	55
0602923220023	DUANE N FRESONKE	3557 STINSON BLVD N E	Saint Anthony	Mississippi WMO	Rice Creek WSD	>50% drains to RCWD, hydro boundary change	5	56
0602923220024	JOEL MARQUETTE	3559 STINSON BLVD N E	Saint Anthony	Mississippi WMO	Rice Creek WSD	>50% drains to RCWD, hydro boundary change	5	57

MWMO-Changing Parcel List

0602923220025	MATTHEW JOHN KROENING	3605 STINSON BLVD N E	Saint Anthony	Mississippi WMO	Rice Creek WSD	>50% drains to RCWD, hydro boundary change		5	58
0602923220041	K DOLMA & K TSERING	2516 36TH AVE N E	Saint Anthony	Mississippi WMO	Rice Creek WSD	>50% drains to RCWD, hydro boundary change	5 & 6		60
0602923220087	MORGAN X LLC	2400 37TH AVE N E	Saint Anthony	Mississippi WMO	Rice Creek WSD	>50% drains to RCWD, hydro boundary change		5	61
0602923220091	JODY HORAK & SABRINA M HORAK	3628 ROOSEVELT ST N E	Saint Anthony	Mississippi WMO	Rice Creek WSD	>50% drains to RCWD, hydro boundary change		5	62
0602923220092	ELAINE MATTHYS	3624 ROOSEVELT ST N E	Saint Anthony	Mississippi WMO	Rice Creek WSD	>50% drains to RCWD, hydro boundary change		5	63
0602923220093	M J WATSON & K M WATSON	3620 ROOSEVELT ST N E	Saint Anthony	Mississippi WMO	Rice Creek WSD	>50% drains to RCWD, hydro boundary change		5	64
0602923220094	SIRRI ATANG NOMO ONGOLO	3616 ROOSEVELT ST N E	Saint Anthony	Mississippi WMO	Rice Creek WSD	>50% drains to RCWD, hydro boundary change		5	65
0602923220095	T A CHERNE & L L J CHERNE	3612 ROOSEVELT ST N E	Saint Anthony	Mississippi WMO	Rice Creek WSD	>50% drains to RCWD, hydro boundary change		5	66
0602923220098	JON P & SARAH J LIESENFELD	3621 STINSON BLVD N E	Saint Anthony	Mississippi WMO	Rice Creek WSD	>50% drains to RCWD, hydro boundary change		5	67
0602923220099	D TORRES & S M MAESTAS	3625 STINSON BLVD N E	Saint Anthony	Mississippi WMO	Rice Creek WSD	>50% drains to RCWD, hydro boundary change		5	68
0602923220104	ERIC JUNGELS/PAUL JUNGELS	3639 STINSON BLVD N E	Saint Anthony	Mississippi WMO	Rice Creek WSD	>50% drains to RCWD, hydro boundary change		5	69
0602923220120	KRISTEN SIMON/ELLIOT IKELER	3533 ROOSEVELT ST N E	Saint Anthony	Mississippi WMO	Rice Creek WSD	>50% drains to RCWD, hydro boundary change	5 & 6		70
0602923220121	MINH-THU T CAO	3557 ROOSEVELT ST N E	Saint Anthony	Mississippi WMO	Rice Creek WSD	>50% drains to RCWD, hydro boundary change	5 & 6		71
0602923220122	T A RANDLE & J MARIE RANDLE	2504 36TH AVE N E	Saint Anthony	Mississippi WMO	Rice Creek WSD	>50% drains to RCWD, hydro boundary change	5 & 6		72
0602923220124	3RD ST NE & ROOSEVELT ST LLC	3642 ROOSEVELT ST N E	Saint Anthony	Mississippi WMO	Rice Creek WSD	>50% drains to RCWD, hydro boundary change		5	74
0602923220126	A SAMULENAS & M BROWN	3548 ROOSEVELT ST N E	Saint Anthony	Mississippi WMO	Rice Creek WSD	>50% drains to RCWD, hydro boundary change		5	75
0602923220127	CAROL WIESE	3601 STINSON BLVD N E	Saint Anthony	Mississippi WMO	Rice Creek WSD	>50% drains to RCWD, hydro boundary change		5	76
0602923220128	KENNETH R KLUCAS	3529 ROOSEVELT ST N E	Saint Anthony	Mississippi WMO	Rice Creek WSD	>50% drains to RCWD, hydro boundary change	5 & 6		77
0602923220130	A L FISHER & J DOBLER	3631 STINSON BLVD N E	Saint Anthony	Mississippi WMO	Rice Creek WSD	>50% drains to RCWD, hydro boundary change		5	78
0602923220131	M A DUNKLEY & A DUNKLEY	3609 STINSON BLVD N E	Saint Anthony	Mississippi WMO	Rice Creek WSD	>50% drains to RCWD, hydro boundary change		5	79
0602923220132	MARK R & HEATHER PETERSON	3633 STINSON BLVD N E	Saint Anthony	Mississippi WMO	Rice Creek WSD	>50% drains to RCWD, hydro boundary change		5	80
0602923220133	T WILCOX & R CROSWELL	3615 STINSON BLVD N E	Saint Anthony	Mississippi WMO	Rice Creek WSD	>50% drains to RCWD, hydro boundary change		5	81
0602923220135	G P BLENKUSH & N BLENKUSH	2508 36TH AVE N E	Saint Anthony	Mississippi WMO	Rice Creek WSD	>50% drains to RCWD, hydro boundary change	5 & 6		82
0602923220138	DIANA LEA-KAHLE	3632 ROSSEVELT ST NE	Saint Anthony	Mississippi WMO	Rice Creek WSD	>50% drains to RCWD, hydro boundary change		5	83
0602923410006	HAMAD M AL-HUTHAILI		Saint Anthony	Mississippi WMO	Rice Creek WSD	>50% drains to RCWD, hydro boundary change	6 & 7		84
0602923410042	K KELLEY & M METZGER	3043 CROFT DR	Saint Anthony	Mississippi WMO	Rice Creek WSD	>50% drains to RCWD, hydro boundary change		7	85
0602923410043	K KELLEY & M METZGER	3043 CROFT DR	Saint Anthony	Mississippi WMO	Rice Creek WSD	>50% drains to RCWD, hydro boundary change		7	86
0602923410044	GREGORY W BROBURG	3039 CROFT DR	Saint Anthony	Mississippi WMO	Rice Creek WSD	>50% drains to RCWD, hydro boundary change		7	87
0602923410045	M CHRISTY-HOP ET AL W/L EST	3035 CROFT DR NE	Saint Anthony	Mississippi WMO	Rice Creek WSD	>50% drains to RCWD, hydro boundary change		7	88
0602923410046	T J GRIFFIN/J A GRIFFIN	3044 CROFT DR NE	Saint Anthony	Mississippi WMO	Rice Creek WSD	>50% drains to RCWD, hydro boundary change		7	89
0602923410047	S J & S K TOMCZYK	3040 CROFT DR	Saint Anthony	Mississippi WMO	Rice Creek WSD	>50% drains to RCWD, hydro boundary change		7	90
0602923410048	W WALKER III & L M WALKER	3036 CROFT DR	Saint Anthony	Mississippi WMO	Rice Creek WSD	>50% drains to RCWD, hydro boundary change		7	91
0602923410049	GORDON L RAMM TRUST ETAL	3032 CROFT DR	Saint Anthony	Mississippi WMO	Rice Creek WSD	>50% drains to RCWD, hydro boundary change		7	92
0602923410050	R & C STRONCEK	3416 31ST AVE N E	Saint Anthony	Mississippi WMO	Rice Creek WSD	>50% drains to RCWD, hydro boundary change		7	93
0602923410051	C J KELDERMAN/J L KELDERMAN	3420 31ST AVE N E	Saint Anthony	Mississippi WMO	Rice Creek WSD	>50% drains to RCWD, hydro boundary change		7	94
0602923410052	S A GOEMER & S A ANDERSEN	3424 31ST AVE NE	Saint Anthony	Mississippi WMO	Rice Creek WSD	>50% drains to RCWD, hydro boundary change		7	95
0602923410053	E S BERENDES & J A BERENDES	3500 31ST AVE N E	Saint Anthony	Mississippi WMO	Rice Creek WSD	>50% drains to RCWD, hydro boundary change		7	96
0602923410097	REHBEIN-HUSNIK DEVEL CO		Saint Anthony	Mississippi WMO	Rice Creek WSD	>50% drains to RCWD, hydro boundary change	6 & 7		97
0602923410136	DELORIS E OUREN	3201 OLD HWY 8	Saint Anthony	Mississippi WMO	Rice Creek WSD	>50% drains to RCWD, hydro boundary change	6 & 7		98
0602923410137	DILJIT S KHOSA	3203 OLD HWY 8	Saint Anthony	Mississippi WMO	Rice Creek WSD	>50% drains to RCWD, hydro boundary change	6 & 7		99
0602923410138	WOODS EDGE HOMEOWNERS ASSO CN		Saint Anthony	Mississippi WMO	Rice Creek WSD	>50% drains to RCWD, hydro boundary change	6 & 7		100
0602923410141	ABU-HURAIRA ISLAMIC CENTER	3055 OLD HIGHWAY 8 #106	Saint Anthony	Mississippi WMO	Rice Creek WSD	>50% drains to RCWD, hydro boundary change		7	101
0602923420001	JACQUEE LYNN NASHKO	3308 33RD AVE N E	Saint Anthony	Mississippi WMO	Rice Creek WSD	>50% drains to RCWD, hydro boundary change	6 & 7		102
0602923420002	J J SOMMERVILLE/J M O'LEARY	3208 RANKIN ROAD	Saint Anthony	Mississippi WMO	Rice Creek WSD	>50% drains to RCWD, hydro boundary change	6 & 7		103
0602923420003	DONALD P CONNELLY ET AL	3200 RANKIN ROAD NE	Saint Anthony	Mississippi WMO	Rice Creek WSD	>50% drains to RCWD, hydro boundary change	6 & 7		104
0602923420004	DONALD P CONNELLY ET AL	3200 RANKIN ROAD NE	Saint Anthony	Mississippi WMO	Rice Creek WSD	>50% drains to RCWD, hydro boundary change	6 & 7		105
0602923420006	T & K AMES	3303 32ND AVE NE	Saint Anthony	Mississippi WMO	Rice Creek WSD	>50% drains to RCWD, hydro boundary change	6 & 7		106
0602923420026	P ENGBRETSON/E ENGBRETSON	3124 RANKIN ROAD NE	Saint Anthony	Mississippi WMO	Rice Creek WSD	>50% drains to RCWD, hydro boundary change		7	107
0602923420098	MICHAEL EDWARD WINEK	3216 HILLDALE AVE N E	Saint Anthony	Mississippi WMO	Rice Creek WSD	>50% drains to RCWD, hydro boundary change	6 & 7		108
0602923420099	NITA KREVANS	3301 32ND AVE N E	Saint Anthony	Mississippi WMO	Rice Creek WSD	>50% drains to RCWD, hydro boundary change	6 & 7		109
0602923420100	KINGS LAKE LLC	3217 32ND AVE N E	Saint Anthony	Mississippi WMO	Rice Creek WSD	>50% drains to RCWD, hydro boundary change	6 & 7		110
0602923420126	HEIDI MARQUART	3304 33RD AVE N E	Saint Anthony	Mississippi WMO	Rice Creek WSD	>50% drains to RCWD, hydro boundary change	6 & 7		111
0602923420127	B A FINGER & H J FINGER	3300 33RD AVE N E	Saint Anthony	Mississippi WMO	Rice Creek WSD	>50% drains to RCWD, hydro boundary change	6 & 7		112
0602923420128	DOUGLAS V DURAND ET AL W/L E	3301 HILLDALE AVE NE	Saint Anthony	Mississippi WMO	Rice Creek WSD	>50% drains to RCWD, hydro boundary change	6 & 7		113
0602923420129	DOUGLAS V DURAND ET AL W/L E	3301 HILLDALE AVE NE	Saint Anthony	Mississippi WMO	Rice Creek WSD	>50% drains to RCWD, hydro boundary change	6 & 7		114
0602923420130	LAWRENCE C RANALLO TRUST	3224 RANKIN RD	Saint Anthony	Mississippi WMO	Rice Creek WSD	>50% drains to RCWD, hydro boundary change	6 & 7		115

MWMO-Changing Parcel List

0602923420131	K I ISAACSON & D W ISAACSON	3220 RANKIN RD	Saint Anthony	Mississippi WMO	Rice Creek WSD	>50% drains to RCWD, hydro boundary change	6 & 7	116
0602923420132	SCOTT SIMMONS/KELLI SIMMONS	3216 RANKIN RD	Saint Anthony	Mississippi WMO	Rice Creek WSD	>50% drains to RCWD, hydro boundary change	6 & 7	117
0602923420135	HALEY JO LUDWIG	3216 33RD AVE N E	Saint Anthony	Mississippi WMO	Rice Creek WSD	>50% drains to RCWD, hydro boundary change	6 & 7	118
0602923420140	ROGER J MARTIN	3217 HILLDALE AVE N E	Saint Anthony	Mississippi WMO	Rice Creek WSD	>50% drains to RCWD, hydro boundary change	6 & 7	119
0602923420141	J & K KOSKI	3308 HILLDALE AVE	Saint Anthony	Mississippi WMO	Rice Creek WSD	>50% drains to RCWD, hydro boundary change	6 & 7	120
0602923420142	D J STEVERMER/J S STEVERMER	3300 HILLDALE AVE	Saint Anthony	Mississippi WMO	Rice Creek WSD	>50% drains to RCWD, hydro boundary change	6 & 7	121
0602923420151	R A BERTALAN/F J BERTALAN	3307 32ND AVE N E	Saint Anthony	Mississippi WMO	Rice Creek WSD	>50% drains to RCWD, hydro boundary change	6 & 7	122
0602923420152	J P POWELL & K L POPPLER	3220 33RD AVE N E	Saint Anthony	Mississippi WMO	Rice Creek WSD	>50% drains to RCWD, hydro boundary change	6 & 7	123
0602923440042	M CHRISTY-HOP ET AL W/L EST	3035 CROFT DR	Saint Anthony	Mississippi WMO	Rice Creek WSD	>50% drains to RCWD, hydro boundary change		7 124
0602923440043	NICHOLAS BOLECHOWSKI	3031 CROFT DR	Saint Anthony	Mississippi WMO	Rice Creek WSD	>50% drains to RCWD, hydro boundary change		7 125
0602923440044	L CLARKE & L M CLARKE	3025 CROFT DR	Saint Anthony	Mississippi WMO	Rice Creek WSD	>50% drains to RCWD, hydro boundary change		7 126
0602923440047	MATTHEW BERTZ & CLAIRE BERTZ	3028 CROFT DR	Saint Anthony	Mississippi WMO	Rice Creek WSD	>50% drains to RCWD, hydro boundary change		7 127
0602923440048	DANIEL SMITH/STEPHANIE SMITH	3024 CROFT DR	Saint Anthony	Mississippi WMO	Rice Creek WSD	>50% drains to RCWD, hydro boundary change		7 128
0602923440049	COREY J ERICKSON	3020 CROFT DR	Saint Anthony	Mississippi WMO	Rice Creek WSD	>50% drains to RCWD, hydro boundary change		7 129
0602923440050	MARIA L MERRILL	3012 CROFT DR	Saint Anthony	Mississippi WMO	Rice Creek WSD	>50% drains to RCWD, hydro boundary change		7 130
0602923440051	THOMAS A RANALLO	3261 OLD HWY 8	Saint Anthony	Mississippi WMO	Rice Creek WSD	>50% drains to RCWD, hydro boundary change		7 131
0602923440054	D J TSHIDA & T M TSHIDA	3404 31ST AVE N E	Saint Anthony	Mississippi WMO	Rice Creek WSD	>50% drains to RCWD, hydro boundary change		7 132
0602923440055	JENIFER MCGUIRE	3408 31ST AVE N E	Saint Anthony	Mississippi WMO	Rice Creek WSD	>50% drains to RCWD, hydro boundary change		7 133
0602923440056	C I HICKMAN & B A HICKMAN	3412 31ST AVE N E	Saint Anthony	Mississippi WMO	Rice Creek WSD	>50% drains to RCWD, hydro boundary change		7 134
0602923440093	SOTHAMITH CHAU	3021 CROFT DR	Saint Anthony	Mississippi WMO	Rice Creek WSD	>50% drains to RCWD, hydro boundary change		7 135
0602923210083	JEFFREY YORK/ELIZABETH YORK	3600 HARDING ST N E	Saint Anthony	Rice Creek WSD	Mississippi WMO	<50% in RCWD, hydro boundary change		6 16
0602923210145	J M BARRON & D M BARRON	2605 36TH AVE N E	Saint Anthony	Rice Creek WSD	Mississippi WMO	<50% in RCWD, hydro boundary change		6 40
0602923220039	ERIN & HANS ENGBRETSON	3600 EDWARD ST N E	Saint Anthony	Rice Creek WSD	Mississippi WMO	<50% in RCWD, hydro boundary change	5 & 6	59
0602923220123	ANNA M NELSON TRUST	2601 36TH AVE N E	Saint Anthony	Rice Creek WSD	Mississippi WMO	<50% in RCWD, hydro boundary change		6 73
172923230074	WALNUT LLC	1948 WALNUT ST	Lauderdale	Rice Creek WSD	Mississippi WMO	per Lauderdale request for boundary to follow roads		9 136
172923230004	JACK D BARLOW	1947 EUSTIS ST	Lauderdale	Rice Creek WSD	Mississippi WMO	per Lauderdale request for boundary to follow roads		9 137
172923230005	BRIAN SWANSON	1939 EUSTIS ST	Lauderdale	Rice Creek WSD	Mississippi WMO	per Lauderdale request for boundary to follow roads		9 138
172923230011	MIKAYLA DAUB	1936 MALVERN ST	Lauderdale	Rice Creek WSD	Mississippi WMO	per Lauderdale request for boundary to follow roads		9 139
172923230010	MADELYN SMITH	1932 MALVERN ST	Lauderdale	Rice Creek WSD	Mississippi WMO	per Lauderdale request for boundary to follow roads		9 140
172923230007	JOHNATHON D FANKHAUSER	1921 EUSTIS ST	Lauderdale	Rice Creek WSD	Mississippi WMO	per Lauderdale request for boundary to follow roads		9 141
172923230009	JEROME A DOHERTY	1926 MALVERN ST	Lauderdale	Rice Creek WSD	Mississippi WMO	per Lauderdale request for boundary to follow roads		9 142
172923230008	GRANT ADAMS	1922 MALVERN ST	Lauderdale	Rice Creek WSD	Mississippi WMO	per Lauderdale request for boundary to follow roads		9 143
172923230067	GARY A SAX	1935 WALNUT ST	Lauderdale	Rice Creek WSD	Mississippi WMO	per Lauderdale request for boundary to follow roads		9 144
172923230066	NORMAN E ROSENKRANZ	1925 WALNUT ST	Lauderdale	Rice Creek WSD	Mississippi WMO	per Lauderdale request for boundary to follow roads		9 145
172923230036	TRICIA LYNN WILKINSON	1938 WALNUT ST	Lauderdale	Rice Creek WSD	Mississippi WMO	per Lauderdale request for boundary to follow roads		9 146
172923230029	ANDREW D LEIN	1941 MALVERN ST	Lauderdale	Rice Creek WSD	Mississippi WMO	per Lauderdale request for boundary to follow roads		9 147
172923230030	CLAYTON CHRISTENSEN	1933 MALVERN ST	Lauderdale	Rice Creek WSD	Mississippi WMO	per Lauderdale request for boundary to follow roads		9 148
172923230035	AIR YANG	1936 WALNUT ST	Lauderdale	Rice Creek WSD	Mississippi WMO	per Lauderdale request for boundary to follow roads		9 149
172923230031	LAWRENCE JOHN BRUHN TR	1931 MALVERN ST	Lauderdale	Rice Creek WSD	Mississippi WMO	per Lauderdale request for boundary to follow roads		9 150
172923230032	ALEXANDRA ANDERSON	1927 MALVERN ST	Lauderdale	Rice Creek WSD	Mississippi WMO	per Lauderdale request for boundary to follow roads		9 151
172923230034	WILLIAM HEBL	1924 WALNUT ST	Lauderdale	Rice Creek WSD	Mississippi WMO	per Lauderdale request for boundary to follow roads		9 152
172923230033	ROBERT O BERKELAND	1923 MALVERN ST	Lauderdale	Rice Creek WSD	Mississippi WMO	per Lauderdale request for boundary to follow roads		9 153
172923230037	NICHOLAS L RICE	1944 WALNUT ST	Lauderdale	Rice Creek WSD	Mississippi WMO	per Lauderdale request for boundary to follow roads		9 154
172923230103	KEITH P DYRUD	1805 WALNUT ST	Lauderdale	Rice Creek WSD	Mississippi WMO	per Lauderdale request for boundary to follow roads	9 & 10	155
172923230079	ADAM L PHILLIPS	1835 MALVERN ST	Lauderdale	Rice Creek WSD	Mississippi WMO	per Lauderdale request for boundary to follow roads	9 & 10	156
172923230080	RALPH C MIKEL	1843 MALVERN ST	Lauderdale	Rice Creek WSD	Mississippi WMO	per Lauderdale request for boundary to follow roads	9 & 10	157
172923230076	ABBIE JO GJELHAUG	1937 EUSTIS ST	Lauderdale	Rice Creek WSD	Mississippi WMO	per Lauderdale request for boundary to follow roads		9 158
172923230077	STEPHANIE S GEORGESEN	1931 EUSTIS ST	Lauderdale	Rice Creek WSD	Mississippi WMO	per Lauderdale request for boundary to follow roads		9 159
172923230073	TIMOTHY O RYSGAARD	1950 WALNUT ST	Lauderdale	Rice Creek WSD	MISSISSIPPI WMO	<50% in RCWD, hydro boundary change		9 520
172923230021	CYNTHIA BERGER	1975 MALVERN ST	Lauderdale	Rice Creek WSD	MISSISSIPPI WMO	<50% in RCWD, hydro boundary change		9 592
172923230020	PAUL F KIRKEGAARD JR	1976 MALVERN ST	Lauderdale	Rice Creek WSD	MISSISSIPPI WMO	<50% in RCWD, hydro boundary change		9 593
172923230019	ANDREW KOVALA	1972 MALVERN ST	Lauderdale	Rice Creek WSD	MISSISSIPPI WMO	<50% in RCWD, hydro boundary change		9 594
172923230001	ABIGAIL WILLIAMSON	1975 EUSTIS ST	Lauderdale	Rice Creek WSD	MISSISSIPPI WMO	<50% in RCWD, hydro boundary change		9 595
172923230002	JEFFREY A STUKEL	1963 EUSTIS ST	Lauderdale	Rice Creek WSD	MISSISSIPPI WMO	<50% in RCWD, hydro boundary change		9 596
172923230018	E TIMOTHY LYLES	1964 MALVERN ST	Lauderdale	Rice Creek WSD	MISSISSIPPI WMO	<50% in RCWD, hydro boundary change		9 597
172923230017	JANE FESLER	1962 MALVERN ST	Lauderdale	Rice Creek WSD	MISSISSIPPI WMO	<50% in RCWD, hydro boundary change		9 598

MWMO-Changing Parcel List

172923230016	ZACHARY BELL	1954 MALVERN ST	Lauderdale	Rice Creek WSD	MISSISSIPPI WMO	<50% in RCWD, hydro boundary change	9	599
172923230003	ANA WALKER	1955 EUSTIS ST	Lauderdale	Rice Creek WSD	MISSISSIPPI WMO	<50% in RCWD, hydro boundary change	9	600
172923230015	ROSE RINDER	1950 MALVERN ST	Lauderdale	Rice Creek WSD	MISSISSIPPI WMO	<50% in RCWD, hydro boundary change	9	601
172923230014	JANET A REIFSTECK	1948 MALVERN ST	Lauderdale	Rice Creek WSD	MISSISSIPPI WMO	<50% in RCWD, hydro boundary change	9	602
172923230013	JAMES QUAYLE	1944 MALVERN ST	Lauderdale	Rice Creek WSD	MISSISSIPPI WMO	<50% in RCWD, hydro boundary change	9	603
172923230012	STEVEN R WESTRUM	1938 MALVERNE ST	Lauderdale	Rice Creek WSD	MISSISSIPPI WMO	<50% in RCWD, hydro boundary change	9	604
172923230046	STATE OF MN MAILSTOP 631	WALNUT ST	Lauderdale	Rice Creek WSD	MISSISSIPPI WMO	<50% in RCWD, hydro boundary change	9	605
172923230047	STATE OF MN MAILSTOP 631	WALNUT ST	Lauderdale	Rice Creek WSD	MISSISSIPPI WMO	<50% in RCWD, hydro boundary change	9	606
172923230061	JANE E RICHARDSON	1955 WALNUT ST	Lauderdale	Rice Creek WSD	MISSISSIPPI WMO	<50% in RCWD, hydro boundary change	9	607
172923230062	BRIAN K LINDSTROM	1951 WALNUT ST	Lauderdale	Rice Creek WSD	MISSISSIPPI WMO	<50% in RCWD, hydro boundary change	9	608
172923230063	STEPHEN P MARTINSON	1943 WALNUT ST	Lauderdale	Rice Creek WSD	MISSISSIPPI WMO	<50% in RCWD, hydro boundary change	9	609
172923230071	STATE OF MN MAILSTOP 631	WALNUT ST	Lauderdale	Rice Creek WSD	MISSISSIPPI WMO	<50% in RCWD, hydro boundary change	9	610
172923230060	SARAH LOCHNER	1959 WALNUT ST	Lauderdale	Rice Creek WSD	MISSISSIPPI WMO	<50% in RCWD, hydro boundary change	9	611
172923230070	STATE OF MN MAILSTOP 631	WALNUT ST	Lauderdale	Rice Creek WSD	MISSISSIPPI WMO	<50% in RCWD, hydro boundary change	9	612
172923230075	MICHAEL EDWARD BECK	1974 WALNUT ST	Lauderdale	Rice Creek WSD	MISSISSIPPI WMO	<50% in RCWD, hydro boundary change	9	613
172923230022	BRENT W RINEHART	1971 MALVERN ST	Lauderdale	Rice Creek WSD	MISSISSIPPI WMO	<50% in RCWD, hydro boundary change	9	614
172923230043	MARI HANSEN	1970 WALNUT ST	Lauderdale	Rice Creek WSD	MISSISSIPPI WMO	<50% in RCWD, hydro boundary change	9	615
172923230023	DAVID A CLAPP	1963 MALVERN ST	Lauderdale	Rice Creek WSD	MISSISSIPPI WMO	<50% in RCWD, hydro boundary change	9	616
172923230042	SETH S DAHLQUIST	1966 WALNUT ST	Lauderdale	Rice Creek WSD	MISSISSIPPI WMO	<50% in RCWD, hydro boundary change	9	617
172923230024	SEAN GUSTAFSON	1961 MALVERN ST	Lauderdale	Rice Creek WSD	MISSISSIPPI WMO	<50% in RCWD, hydro boundary change	9	618
172923230041	E A O POWERS PROPERTIES LLC	1964 WALNUT ST	Lauderdale	Rice Creek WSD	MISSISSIPPI WMO	<50% in RCWD, hydro boundary change	9	619
172923230040	HEATHER S TUEFFEL	1960 WALNUT ST	Lauderdale	Rice Creek WSD	MISSISSIPPI WMO	<50% in RCWD, hydro boundary change	9	620
172923230025	ZHEN ZOU	1953 MALVERN ST	Lauderdale	Rice Creek WSD	MISSISSIPPI WMO	<50% in RCWD, hydro boundary change	9	621
172923230026	TRAVIS SOBECK	1951 MALVERN ST	Lauderdale	Rice Creek WSD	MISSISSIPPI WMO	<50% in RCWD, hydro boundary change	9	622
172923230027	PATRICIA L WASCHBUSCH	1947 MALVERN ST	Lauderdale	Rice Creek WSD	MISSISSIPPI WMO	<50% in RCWD, hydro boundary change	9	623
172923230028	SHAO CHYI LEE TR	1945 MALVERN ST	Lauderdale	Rice Creek WSD	MISSISSIPPI WMO	<50% in RCWD, hydro boundary change	9	624
172923230039	ROBERT NESTEROWICH	1954 WALNUT ST	Lauderdale	Rice Creek WSD	MISSISSIPPI WMO	<50% in RCWD, hydro boundary change	9	625
172923320108	TONY D GOODMANSON	SUMMER ST	Lauderdale	Rice Creek WSD	MISSISSIPPI WMO	<50% in RCWD, hydro boundary change	9 & 10	663
172923320058	RAYMOND J RAPHEAL TR	1823 WALNUT ST	Lauderdale	Rice Creek WSD	MISSISSIPPI WMO	<50% in RCWD, hydro boundary change	9 & 10	664
172923330037	KENDRA KAUPPI	1787 WALNUT ST	Lauderdale	Rice Creek WSD	MISSISSIPPI WMO	<50% in RCWD, hydro boundary change	9 & 10	665
172923330039	MICHELLE CARDINAL	1781 WALNUT ST	Lauderdale	Rice Creek WSD	MISSISSIPPI WMO	<50% in RCWD, hydro boundary change	9 & 10	666
172923330040	DANIEL PHILLIPS	1779 WALNUT ST	Lauderdale	Rice Creek WSD	MISSISSIPPI WMO	<50% in RCWD, hydro boundary change	9 & 10	667
172923330041	M126 LLC	1775 WALNUT ST	Lauderdale	Rice Creek WSD	MISSISSIPPI WMO	<50% in RCWD, hydro boundary change	9 & 10	668
172923330081	BRIAN ROTH	1771 WALNUT ST	Lauderdale	Rice Creek WSD	MISSISSIPPI WMO	<50% in RCWD, hydro boundary change	9 & 10	669
172923320052	ALCAT MINNEAPOLIS LLC	RYAN AVE W	Lauderdale	Rice Creek WSD	MISSISSIPPI WMO	<50% in RCWD, hydro boundary change	9	705
172923320053	DLB INVESTMENTS LLC	WALNUT ST	Lauderdale	Rice Creek WSD	MISSISSIPPI WMO	<50% in RCWD, hydro boundary change	9 & 10	706
172923320120	GENE E CHRISTIANSON	1850 WALNUT ST	Lauderdale	Rice Creek WSD	MISSISSIPPI WMO	<50% in RCWD, hydro boundary change	9 & 10	739
172923330047	EARL J PETERSON	1738 WALNUT ST	Lauderdale	Rice Creek WSD	MISSISSIPPI WMO	<50% in RCWD, hydro boundary change	10	888
172923330010	JULIAN J TAYLOR	1743 EUSTIS ST	Lauderdale	Rice Creek WSD	MISSISSIPPI WMO	<50% in RCWD, hydro boundary change	10	889
172923230072	BOYER FORD TRUCKS INC	2500 BROADWAY DR	Lauderdale	Rice Creek WSD	MISSISSIPPI WMO	<50% in RCWD, hydro boundary change	9	904
172923320116	DLB INVESTMENTS LLC	2520 BROADWAY DR	Lauderdale	Rice Creek WSD	MISSISSIPPI WMO	<50% in RCWD, hydro boundary change	9	905
172923330044	NORTHERN STATES POWER CO	2535 LARPEUTEUR AVE W	Lauderdale	Rice Creek WSD	MISSISSIPPI WMO	<50% in RCWD, hydro boundary change	10 & 11	969
172923320054	DAVID A GRANT	1799 WALNUT ST	Lauderdale	Rice Creek WSD	MISSISSIPPI WMO	<50% in RCWD, hydro boundary change	9 & 10	970
172923330088	MINN TRANS RY CO	LARPEUTEUR AVE W	Lauderdale	Rice Creek WSD	MISSISSIPPI WMO	<50% in RCWD, hydro boundary change	9 & 10	980
172923330002	CHAD KEVIN BERNDT	1775 EUSTIS ST	Lauderdale	Rice Creek WSD	MISSISSIPPI WMO	<50% in RCWD, hydro boundary change	9 & 10	1059
172923330003	PATRICK SMITH	1771 EUSTIS ST	Lauderdale	Rice Creek WSD	MISSISSIPPI WMO	<50% in RCWD, hydro boundary change	9 & 10	1060
172923330006	DUANE L PULFORD	1757 EUSTIS ST	Lauderdale	Rice Creek WSD	MISSISSIPPI WMO	<50% in RCWD, hydro boundary change	10	1061
172923330008	M125 LLC	1751 EUSTIS ST	Lauderdale	Rice Creek WSD	MISSISSIPPI WMO	<50% in RCWD, hydro boundary change	10	1062
172923330009	JULIAN J TAYLOR	1747 EUSTIS ST	Lauderdale	Rice Creek WSD	MISSISSIPPI WMO	<50% in RCWD, hydro boundary change	10	1063
172923330005	FABIAN M ROERS TR	1761 EUSTIS ST	Lauderdale	Rice Creek WSD	MISSISSIPPI WMO	<50% in RCWD, hydro boundary change	9 & 10	1064
172923330007	SCOTT YODAS	1755 EUSTIS ST	Lauderdale	Rice Creek WSD	MISSISSIPPI WMO	<50% in RCWD, hydro boundary change	10	1065
172923330071	TRACY HOMES LLC	1737 EUSTIS ST	Lauderdale	Rice Creek WSD	MISSISSIPPI WMO	<50% in RCWD, hydro boundary change	10	1072
172923330072	IMA 1826 LLC	1733 EUSTIS ST	Lauderdale	Rice Creek WSD	MISSISSIPPI WMO	<50% in RCWD, hydro boundary change	10	1073
172923330073	ADAM P JORGENSEN	1731 EUSTIS ST	Lauderdale	Rice Creek WSD	MISSISSIPPI WMO	<50% in RCWD, hydro boundary change	10	1074
172923330075	JAIDYN M MARTIN	1719 EUSTIS ST	Lauderdale	Rice Creek WSD	MISSISSIPPI WMO	<50% in RCWD, hydro boundary change	10	1075
172923330077	AARON ADAM	1709 EUSTIS ST	Lauderdale	Rice Creek WSD	MISSISSIPPI WMO	<50% in RCWD, hydro boundary change	10	1076

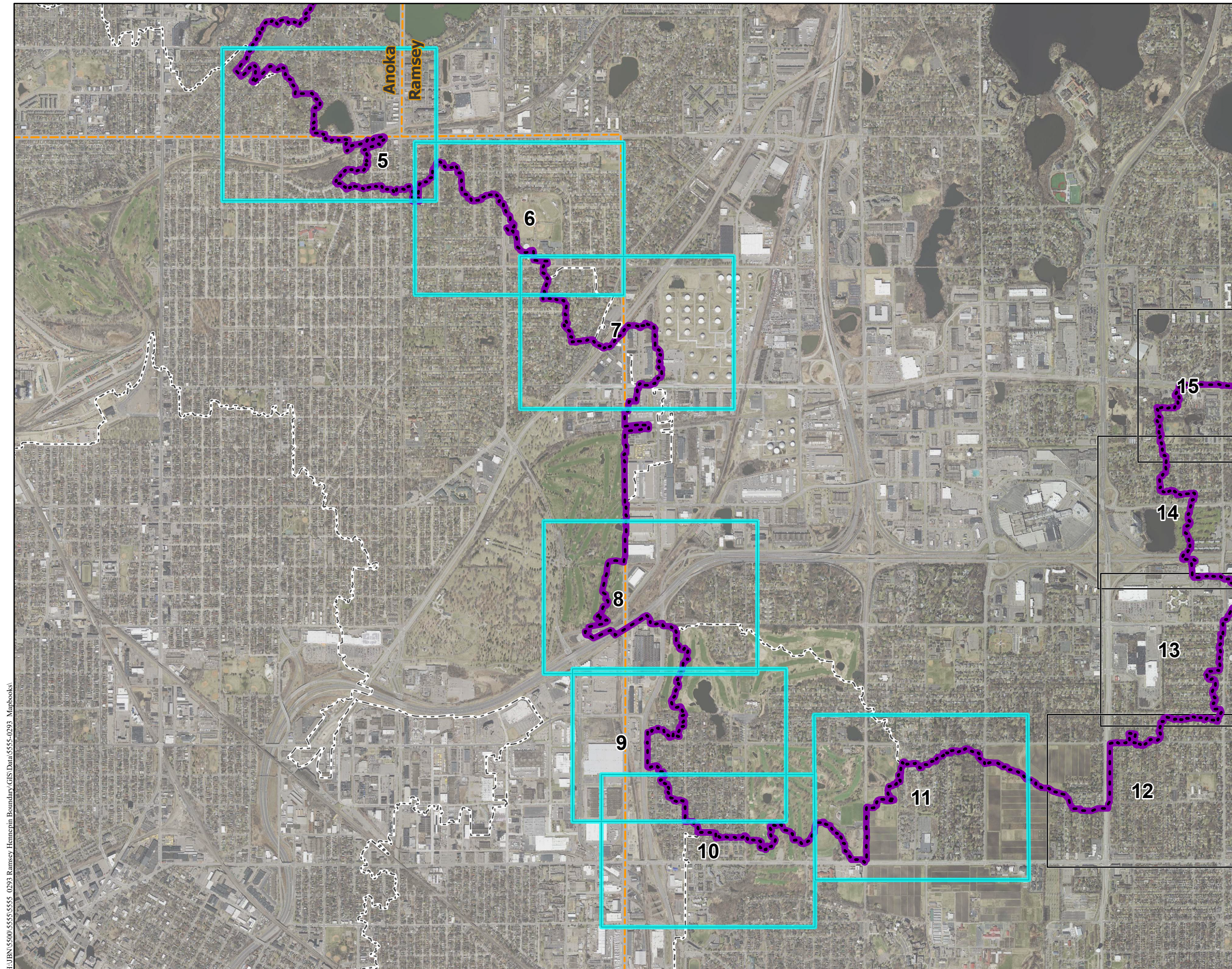
MWMO-Changing Parcel List



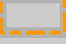
172923330079	M124 LLC	1699 EUSTIS ST	Lauderdale	Rice Creek WSD	MISSISSIPPI WMO	<50% in RCWD, hydro boundary change	10	1077
172923330086	M127 LLC	1707 EUSTIS ST	Lauderdale	Rice Creek WSD	MISSISSIPPI WMO	<50% in RCWD, hydro boundary change	10	1078
172923330087	ZONE 3 LLC	1703 EUSTIS ST	Lauderdale	Rice Creek WSD	MISSISSIPPI WMO	<50% in RCWD, hydro boundary change	10	1079
172923330076	THOMAS J MATTESON	1715 EUSTIS ST	Lauderdale	Rice Creek WSD	MISSISSIPPI WMO	<50% in RCWD, hydro boundary change	10	1080
172923330061	LINCOLN RENTALS, LLC	2439 LARPENTEUR AVE W	Lauderdale	Rice Creek WSD	MISSISSIPPI WMO	<50% in RCWD, hydro boundary change	10	1081
172923330074	LEANNA LARSON	1727 EUSTIS ST	Lauderdale	Rice Creek WSD	MISSISSIPPI WMO	<50% in RCWD, hydro boundary change	10	1087
172923330001	LAUDERDALE AH I LLP	1795 EUSTIS ST	Lauderdale	Rice Creek WSD	MISSISSIPPI WMO	<50% in RCWD, hydro boundary change	9 & 10	1088
172923330004	ANNA FRENCH	1765 EUSTIS ST	Lauderdale	Rice Creek WSD	MISSISSIPPI WMO	<50% in RCWD, hydro boundary change	9 & 10	1089
172923330058	AMY L EPPEN	1695 MALVERN ST	Lauderdale	Rice Creek WSD	MISSISSIPPI WMO	<50% in RCWD, hydro boundary change	10	1090
172923330057	M125 LLC	2453 LARPENTEUR AVE W	Lauderdale	Rice Creek WSD	MISSISSIPPI WMO	<50% in RCWD, hydro boundary change	10	1091
172923330059	TYLER A MCLEOD	2449 LARPENEUR AVE W	Lauderdale	Rice Creek WSD	MISSISSIPPI WMO	<50% in RCWD, hydro boundary change	10	1092
172923330070	MARY A GAASCH	1736 MALVERN ST	Lauderdale	Rice Creek WSD	MISSISSIPPI WMO	<50% in RCWD, hydro boundary change	10	1093
172923330069	LINDSEY GRUTTADAURIO	1732 MALVERN ST	Lauderdale	Rice Creek WSD	MISSISSIPPI WMO	<50% in RCWD, hydro boundary change	10	1094
172923330068	JEREMY N NEWHOUSE	1728 MALVERN ST	Lauderdale	Rice Creek WSD	MISSISSIPPI WMO	<50% in RCWD, hydro boundary change	10	1095
172923330067	JEREMY NEWHOUSE	1724 MALVERN ST	Lauderdale	Rice Creek WSD	MISSISSIPPI WMO	<50% in RCWD, hydro boundary change	10	1096
172923330066	WAI CHEUN LUK	1716 MALVERN ST	Lauderdale	Rice Creek WSD	MISSISSIPPI WMO	<50% in RCWD, hydro boundary change	10	1097
172923330065	JEREMY D DUGGER	1714 MALVERN ST	Lauderdale	Rice Creek WSD	MISSISSIPPI WMO	<50% in RCWD, hydro boundary change	10	1098
172923330064	MARK L NOVOTNY	1706 MALVERN ST	Lauderdale	Rice Creek WSD	MISSISSIPPI WMO	<50% in RCWD, hydro boundary change	10	1099
172923330063	M130 LLC	1700 MALVERN ST	Lauderdale	Rice Creek WSD	MISSISSIPPI WMO	<50% in RCWD, hydro boundary change	10	1100
172923330048	M127 LLC	1739 MALVERN ST	Lauderdale	Rice Creek WSD	MISSISSIPPI WMO	<50% in RCWD, hydro boundary change	10	1101
172923330049	SARAH HEINY	1735 MALVERN ST	Lauderdale	Rice Creek WSD	MISSISSIPPI WMO	<50% in RCWD, hydro boundary change	10	1102
172923330050	SARA LARSON	1731 MALVERN ST	Lauderdale	Rice Creek WSD	MISSISSIPPI WMO	<50% in RCWD, hydro boundary change	10	1103
172923330051	M124 LLC	1725 MALVERN ST	Lauderdale	Rice Creek WSD	MISSISSIPPI WMO	<50% in RCWD, hydro boundary change	10	1104
172923330052	LORI L BERON	1719 MALVERN ST	Lauderdale	Rice Creek WSD	MISSISSIPPI WMO	<50% in RCWD, hydro boundary change	10	1105
172923330054	MARCUS NEVILS	1709 MALVERN ST	Lauderdale	Rice Creek WSD	MISSISSIPPI WMO	<50% in RCWD, hydro boundary change	10	1106
172923330055	STEVEN P MONSON	1703 MALVERN ST	Lauderdale	Rice Creek WSD	MISSISSIPPI WMO	<50% in RCWD, hydro boundary change	10	1107
172923330056	M127 LLC	1699 MALVERN ST	Lauderdale	Rice Creek WSD	MISSISSIPPI WMO	<50% in RCWD, hydro boundary change	10	1108
172923330046	CITY OF LAUDERDALE	1891 WALNUT ST	Lauderdale	Rice Creek WSD	MISSISSIPPI WMO	<50% in RCWD, hydro boundary change	10	1109
172923320078	SUCHETH SURESH	1831 MALVERN ST	Lauderdale	Rice Creek WSD	MISSISSIPPI WMO	<50% in RCWD, hydro boundary change	9 & 10	1110
172923320077	ERIC G SODERSTROM	1827 MALVERN ST	Lauderdale	Rice Creek WSD	MISSISSIPPI WMO	<50% in RCWD, hydro boundary change	9 & 10	1111
172923320075	BONNIE M TROSKA	1813 MALVERN ST	Lauderdale	Rice Creek WSD	MISSISSIPPI WMO	<50% in RCWD, hydro boundary change	9 & 10	1112
172923320074	BERNARD G CHRISTIANSON TR	1809 MALVERN ST	Lauderdale	Rice Creek WSD	MISSISSIPPI WMO	<50% in RCWD, hydro boundary change	9 & 10	1113
172923320073	DARYLE D GOODMANSON	1803 MALVERN ST	Lauderdale	Rice Creek WSD	MISSISSIPPI WMO	<50% in RCWD, hydro boundary change	9 & 10	1114
172923320072	LEZLIE SHARON CLAPP	1806 WALNUT ST	Lauderdale	Rice Creek WSD	MISSISSIPPI WMO	<50% in RCWD, hydro boundary change	9 & 10	1115
172923320113	RICHARD HINRICHS	1910 WALNUT ST	Lauderdale	Rice Creek WSD	MISSISSIPPI WMO	<50% in RCWD, hydro boundary change	9 & 10	1116
172923320114	SAMANTHA WELLS	1816 WALNUT ST	Lauderdale	Rice Creek WSD	MISSISSIPPI WMO	<50% in RCWD, hydro boundary change	9 & 10	1117
172923320118	JOHN A SWEET TR	1840 WALNUT ST	Lauderdale	Rice Creek WSD	MISSISSIPPI WMO	<50% in RCWD, hydro boundary change	9 & 10	1118
172923330035	DEVON DOUGLAS CAMITSCH	1798 WALNUT ST	Lauderdale	Rice Creek WSD	MISSISSIPPI WMO	<50% in RCWD, hydro boundary change	9 & 10	1119
172923330018	DARYLE D GOODMANSON	1803 MALVERN ST	Lauderdale	Rice Creek WSD	MISSISSIPPI WMO	<50% in RCWD, hydro boundary change	9 & 10	1120
172923330034	SUNG CHUL PARK	1794 WALNUT ST	Lauderdale	Rice Creek WSD	MISSISSIPPI WMO	<50% in RCWD, hydro boundary change	9 & 10	1121
172923330033	CHRISTOPHER BRASEL	1792 WALNUT ST	Lauderdale	Rice Creek WSD	MISSISSIPPI WMO	<50% in RCWD, hydro boundary change	9 & 10	1122
172923330019	ANDREW J DAVIS	1791 MALVERN ST	Lauderdale	Rice Creek WSD	MISSISSIPPI WMO	<50% in RCWD, hydro boundary change	9 & 10	1123
172923330020	BRANDEN S SCHIELD	1783 MALVERN ST	Lauderdale	Rice Creek WSD	MISSISSIPPI WMO	<50% in RCWD, hydro boundary change	9 & 10	1124
172923330030	PAUL D BERKELAND	1774 WALNUT ST	Lauderdale	Rice Creek WSD	MISSISSIPPI WMO	<50% in RCWD, hydro boundary change	9 & 10	1125
172923330021	ELAINE F CLARK	1775 MALVERN ST	Lauderdale	Rice Creek WSD	MISSISSIPPI WMO	<50% in RCWD, hydro boundary change	9 & 10	1126
172923330023	MANUEL A LEON	1759 MALVERN ST	Lauderdale	Rice Creek WSD	MISSISSIPPI WMO	<50% in RCWD, hydro boundary change	10	1127
172923330027	WALLACE T BORNER TR	1754 WALNUT ST	Lauderdale	Rice Creek WSD	MISSISSIPPI WMO	<50% in RCWD, hydro boundary change	10	1128
172923330083	MICHAEL G ROSE	1751 MALVERN ST	Lauderdale	Rice Creek WSD	MISSISSIPPI WMO	<50% in RCWD, hydro boundary change	10	1129
172923330085	SCHUMACHER HOLDINGS LLC	MALVERN ST	Lauderdale	Rice Creek WSD	MISSISSIPPI WMO	<50% in RCWD, hydro boundary change	10	1130
172923330017	TURNER ZAJAC	1766 MALVERN ST	Lauderdale	Rice Creek WSD	MISSISSIPPI WMO	<50% in RCWD, hydro boundary change	9 & 10	1131
172923330014	LISA JOAN RAHN	1754 MALVERN ST	Lauderdale	Rice Creek WSD	MISSISSIPPI WMO	<50% in RCWD, hydro boundary change	10	1132
172923330013	SUSAN KAY WILBERTS TR	1750 MALVERN ST	Lauderdale	Rice Creek WSD	MISSISSIPPI WMO	<50% in RCWD, hydro boundary change	10	1133
172923330012	DIANE E GALVIN	1746 MALVERN ST	Lauderdale	Rice Creek WSD	MISSISSIPPI WMO	<50% in RCWD, hydro boundary change	10	1134
172923330011	M125 LLC	1744 MALVERN ST	Lauderdale	Rice Creek WSD	MISSISSIPPI WMO	<50% in RCWD, hydro boundary change	10	1135
172923330089	PEACE LUTHERAN CHURCH	1744 WALNUT ST	Lauderdale	Rice Creek WSD	MISSISSIPPI WMO	<50% in RCWD, hydro boundary change	10	1136
172923320112	KEITH P DYRUD	1805 WALNUT ST	Lauderdale	Rice Creek WSD	MISSISSIPPI WMO	<50% in RCWD, hydro boundary change	9 & 10	1137

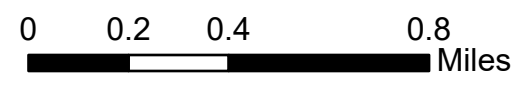
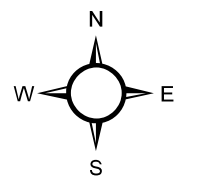
MWMO-Changing Parcel List

172923320055	JUDY A SHELDON	1803 WALNUT ST	Lauderdale	Rice Creek WSD	MISSISSIPPI WMO	<50% in RCWD, hydro boundary change	9 & 10	1138
172923320067	MICHELLE L UPHAM	1834 WALNUT ST	Lauderdale	Rice Creek WSD	MISSISSIPPI WMO	<50% in RCWD, hydro boundary change	9 & 10	1139
172923320068	JAMES D SCHREINER TR	1830 WALNUT ST	Lauderdale	Rice Creek WSD	MISSISSIPPI WMO	<50% in RCWD, hydro boundary change	9 & 10	1140
172923320062	TONY D GOODMANSON	1859 WALNUT ST	Lauderdale	Rice Creek WSD	MISSISSIPPI WMO	<50% in RCWD, hydro boundary change	9 & 10	1141
172923320060	RYAN COLLINS	1835 WALNUT ST	Lauderdale	Rice Creek WSD	MISSISSIPPI WMO	<50% in RCWD, hydro boundary change	9 & 10	1142
172923320106	1853 WALNUT LLC	1853 WALNUT ST	Lauderdale	Rice Creek WSD	MISSISSIPPI WMO	<50% in RCWD, hydro boundary change	9 & 10	1143
172923320107	MATTHEW N ELLINGSON	1847 WALNUT ST	Lauderdale	Rice Creek WSD	MISSISSIPPI WMO	<50% in RCWD, hydro boundary change	9 & 10	1144
172923320119	JAMES T EISCHENS	1846 WALNUT ST	Lauderdale	Rice Creek WSD	MISSISSIPPI WMO	<50% in RCWD, hydro boundary change	9 & 10	1145
172923320059	ADRIANA M SOJOS BUNAY	1829 WALNUT ST	Lauderdale	Rice Creek WSD	MISSISSIPPI WMO	<50% in RCWD, hydro boundary change	9 & 10	1146
172923330036	DAVID J NOVOTNY	1793 WALNUT ST	Lauderdale	Rice Creek WSD	MISSISSIPPI WMO	<50% in RCWD, hydro boundary change	9 & 10	1147
172923330038	JOSEPH L HAEG	1783 WALNUT ST	Lauderdale	Rice Creek WSD	MISSISSIPPI WMO	<50% in RCWD, hydro boundary change	9 & 10	1148
172923330082	TRACEY P KOCH	1769 WALNUT ST	Lauderdale	Rice Creek WSD	MISSISSIPPI WMO	<50% in RCWD, hydro boundary change	10	1149
172923330062	PAAVO TAIPALE	1698 MALVERN ST	Lauderdale	Rice Creek WSD	MISSISSIPPI WMO	<50% in RCWD, hydro boundary change	10	1150
172923330045	CITY OF LAUDERDALE	1891 WALNUT ST	Lauderdale	Rice Creek WSD	MISSISSIPPI WMO	<50% in RCWD, hydro boundary change	10	1151
172923330053	ANTHONY DALSTED	1715 MALVERN ST	Lauderdale	Rice Creek WSD	MISSISSIPPI WMO	<50% in RCWD, hydro boundary change	10	1152
172923320076	ZSOLT VINCZE TR	1812 MALVERN ST	Lauderdale	Rice Creek WSD	MISSISSIPPI WMO	<50% in RCWD, hydro boundary change	9 & 10	1153
172923330032	NATALIE J SWENSON	1786 WALNUT ST	Lauderdale	Rice Creek WSD	MISSISSIPPI WMO	<50% in RCWD, hydro boundary change	9 & 10	1154
172923330031	MICHAEL CARROLL	1784 WALNUT ST	Lauderdale	Rice Creek WSD	MISSISSIPPI WMO	<50% in RCWD, hydro boundary change	9 & 10	1155
172923330029	PAUL D BERKELAND	1774 WALNUT ST	Lauderdale	Rice Creek WSD	MISSISSIPPI WMO	<50% in RCWD, hydro boundary change	9 & 10	1156
172923330028	JOEY N PETERSEN	1766 WALNUT ST	Lauderdale	Rice Creek WSD	MISSISSIPPI WMO	<50% in RCWD, hydro boundary change	9 & 10	1157
172923330084	PAUL K WINKELAAR	1747 MALVERN ST	Lauderdale	Rice Creek WSD	MISSISSIPPI WMO	<50% in RCWD, hydro boundary change	10	1158
172923330016	KAREN BETH HENRY	1764 MALVERN ST	Lauderdale	Rice Creek WSD	MISSISSIPPI WMO	<50% in RCWD, hydro boundary change	9 & 10	1159
172923330015	NHAN B TRAN	1758 MALVERN ST	Lauderdale	Rice Creek WSD	MISSISSIPPI WMO	<50% in RCWD, hydro boundary change	10	1160
172923320121	DANA L MALZER	1824 WALNUT ST	Lauderdale	Rice Creek WSD	MISSISSIPPI WMO	<50% in RCWD, hydro boundary change	9 & 10	1161
172923330080	LAUDERDALE PROPERTY LLC	2421 LARPEUTEUR AVE W	Lauderdale	Rice Creek WSD	MISSISSIPPI WMO	<50% in RCWD, hydro boundary change	10	1302
172923330060	MALZER PROPERTY MANAGEMENT LLC	2443 LARPEUTEUR AVE W	Lauderdale	Rice Creek WSD	MISSISSIPPI WMO	<50% in RCWD, hydro boundary change	10	1303
172923330090	PETER DAVID ZDENEK	1767 MALVERN ST	Lauderdale	Rice Creek WSD	MISSISSIPPI WMO	<50% in RCWD, hydro boundary change	9 & 10	1314
172923330091	ERIC MICHAEL RAYMOND	1763 MALVERN ST	Lauderdale	Rice Creek WSD	MISSISSIPPI WMO	<50% in RCWD, hydro boundary change	9 & 10	1315

Legal Boundary Review



	Surrounding WMO Hydrologic Boundaries
	RCWD Hydrologic Boundary
	County Boundary



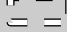





Legal Boundary Review - Page 1 of 41

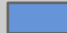

Scale: 1:24,302	Drawn by: KRB	Checked by: CCO	Project No : 5555-0293	Date: 5/8/2024	Sheet: 1 of 41
--------------------	------------------	--------------------	---------------------------	-------------------	-------------------

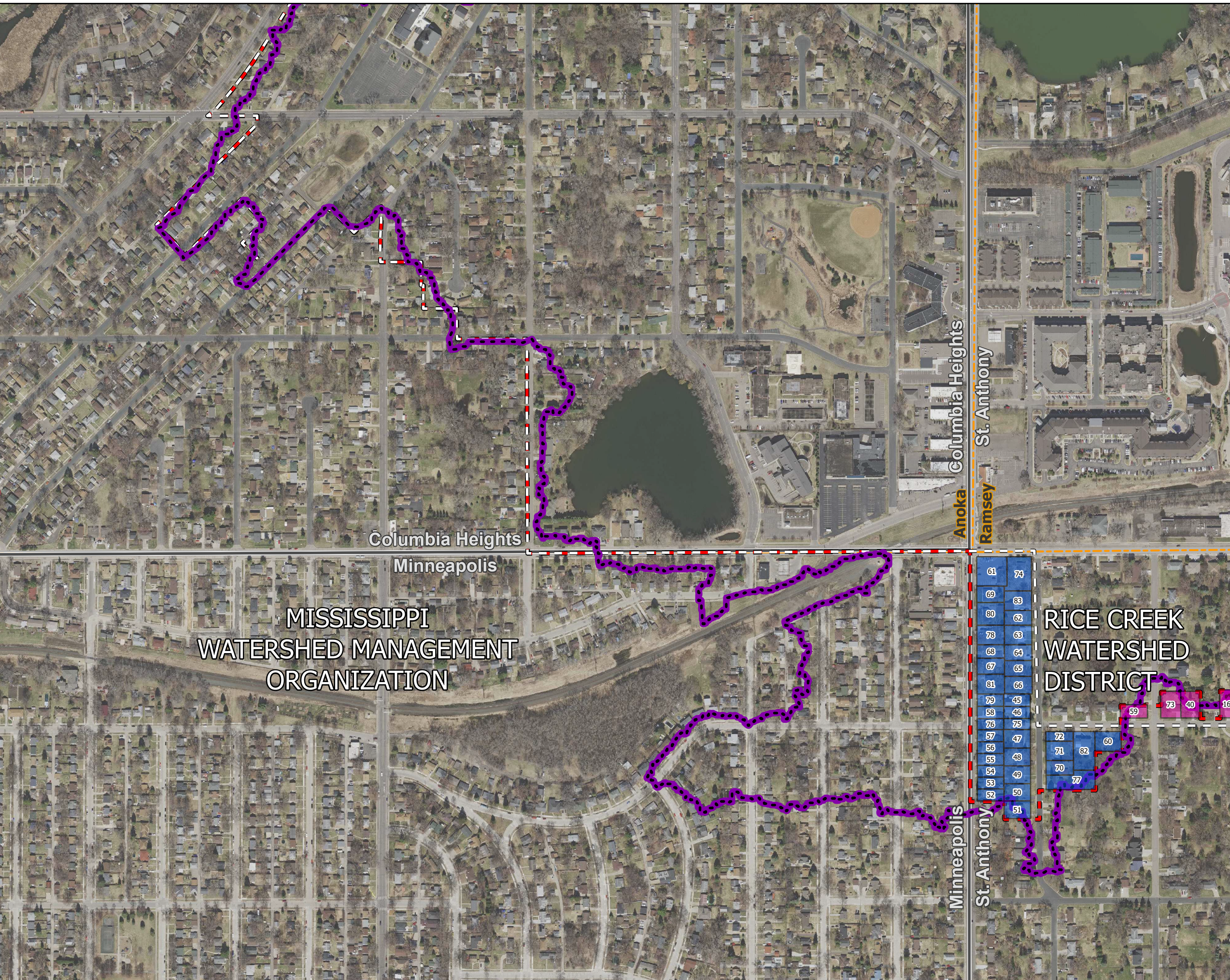
H:\JRN\5500\5555\5555-0293 Ramsey_Hemepin_Boundary\GIS\Data\5555-0293_Mapbooks\

Legal Boundary Review

-  Areas Called Out in Memo
-  RCWD Hydrologic Boundary
-  Current RCWD Legal Boundary
-  Recommended RCWD Legal Boundary
-  City Boundaries
-  County Boundary

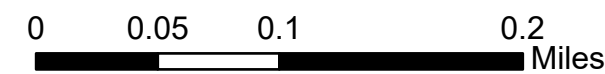
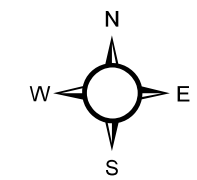
New Watershed

-  RCWD
-  MWMO



MISSISSIPPI
WATERSHED MANAGEMENT
ORGANIZATION

RICE CREEK
WATERSHED
DISTRICT

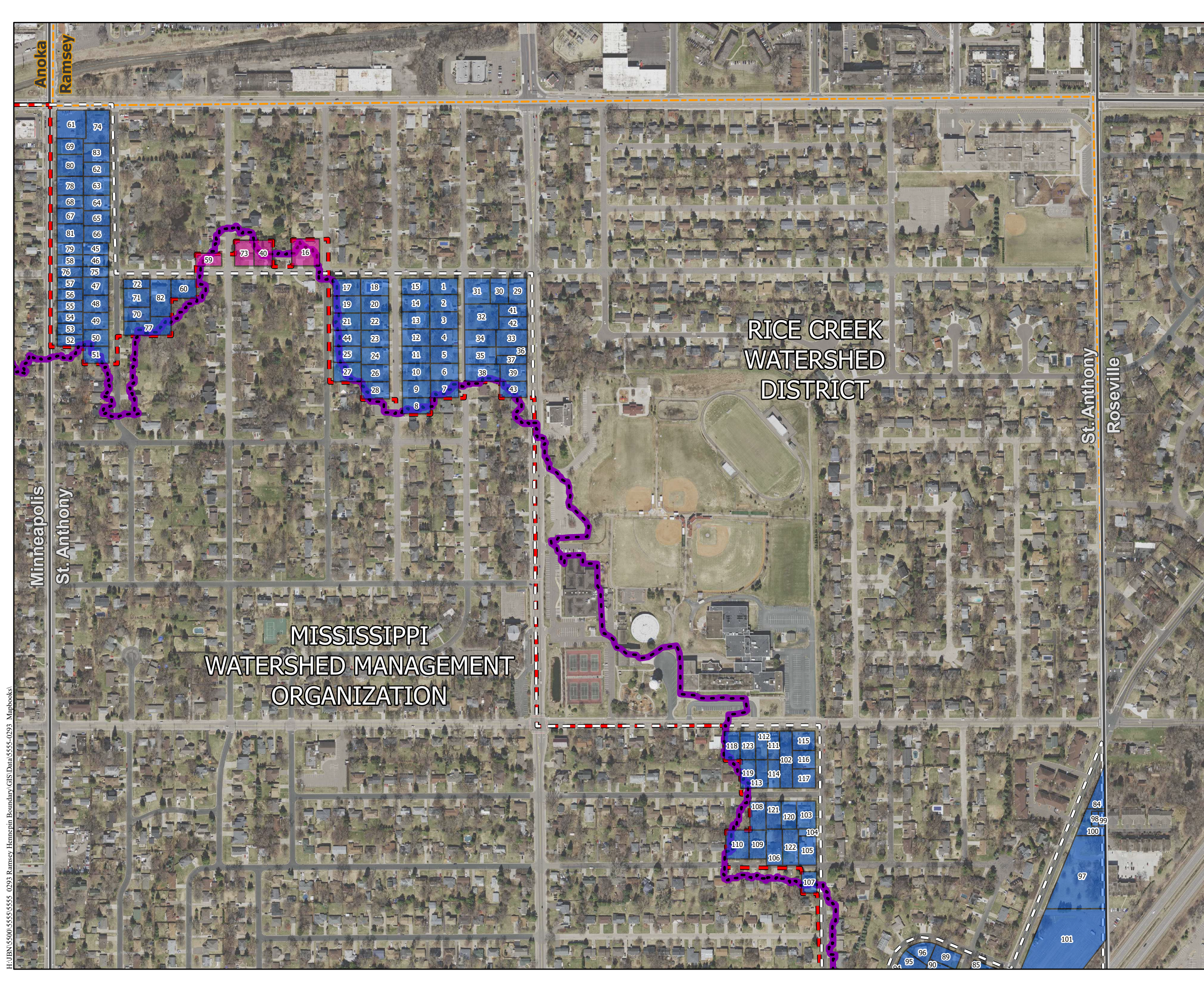


Legal Boundary Review Page 5 of 41

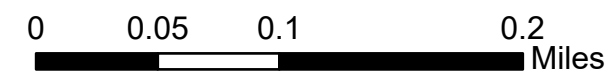
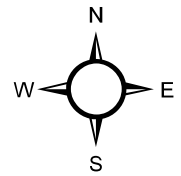
Scale: 1:5,000	Drawn by: KRB	Checked by: CCO	Project No : 5555-0293	Date: 5/8/2024	Sheet: 5 of 41
-------------------	------------------	--------------------	---------------------------	-------------------	-------------------

H:\JBN\5500\5555\5555-0293_Ramsey_Hemepin_Boundary\CIS\Data\5555-0293_Mapbooks\

Legal Boundary Review



- Areas Called Out in Memo
- RCWD Hydrologic Boundary
- Current RCWD Legal Boundary
- Recommended RCWD Legal Boundary
- City Boundaries
- County Boundary
- New Watershed**
 - RCWD
 - MWMO

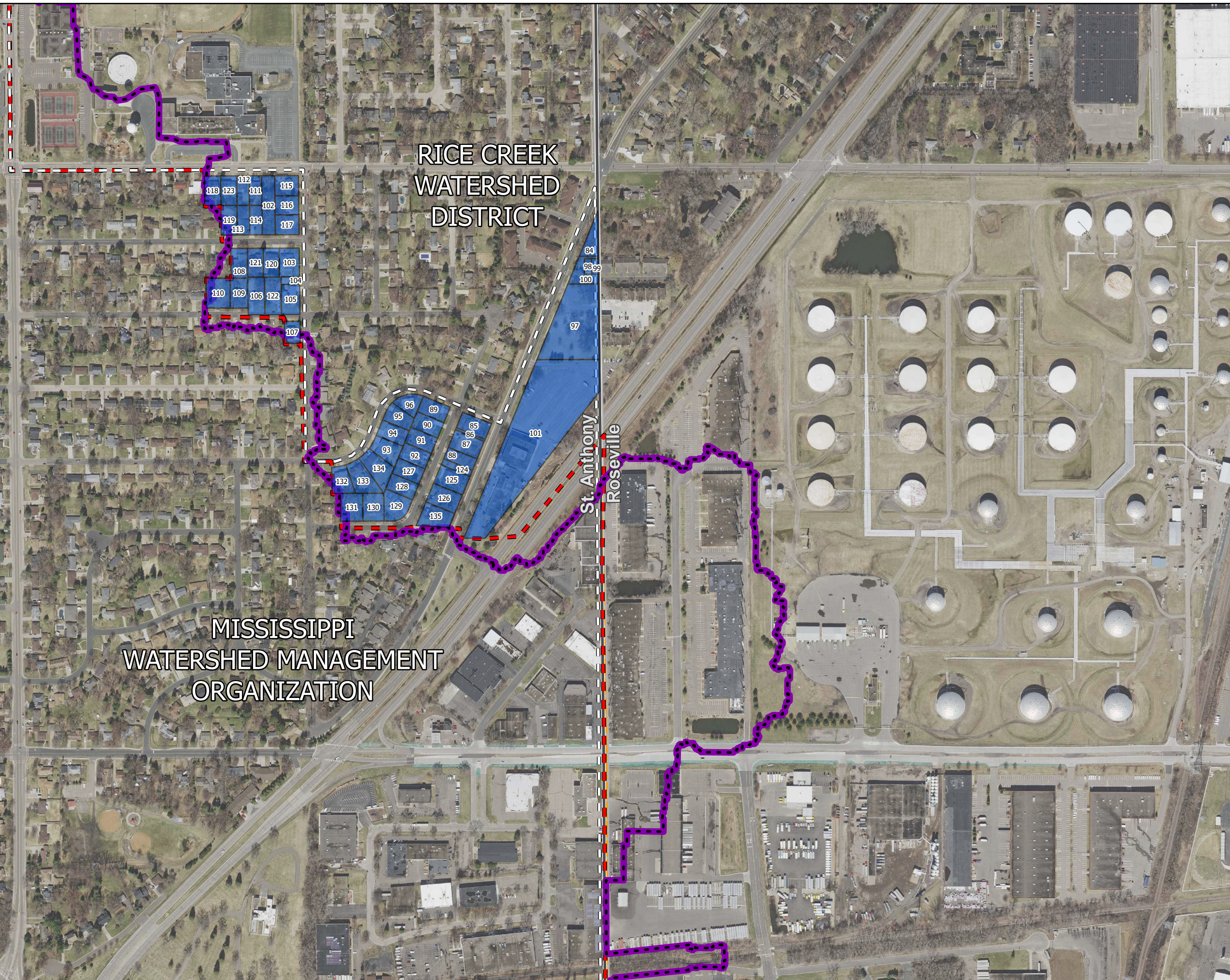









Legal Boundary Review Page 6 of 41

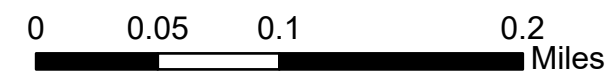
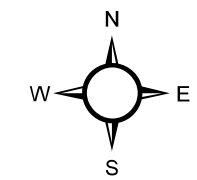
Scale: 1:5,000	Drawn by: KRB	Checked by: CCO	Project No : 5555-0293	Date: 5/8/2024	Sheet: 6 of 41
-------------------	------------------	--------------------	---------------------------	-------------------	-------------------

H:\JRN\5500\5555\5555-0293 Ramsey Hemeipin Boundary\GIS\Data\5555-0293 Mapbooks\

Legal Boundary Review



-  Areas Called Out in Memo
-  RCWD Hydrologic Boundary
-  Current RCWD Legal Boundary
-  Recommended RCWD Legal Boundary
-  City Boundaries
-  County Boundary
- New Watershed**
-  RCWD



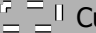





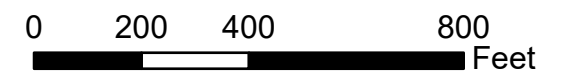
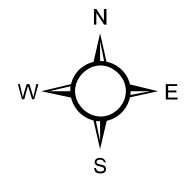
Legal Boundary Review Page 7 of 41

Scale: 1:5,000	Drawn by: KRB	Checked by: CCO	Project No : 5555-0293	Date: 5/8/2024	Sheet: 7 of 41
-------------------	------------------	--------------------	---------------------------	-------------------	-------------------

H:\JBN\55500\55555\55555-0293_Ramsey_Hemepin_Boundary\GIS\Data\55555-0293_Mapbooks\

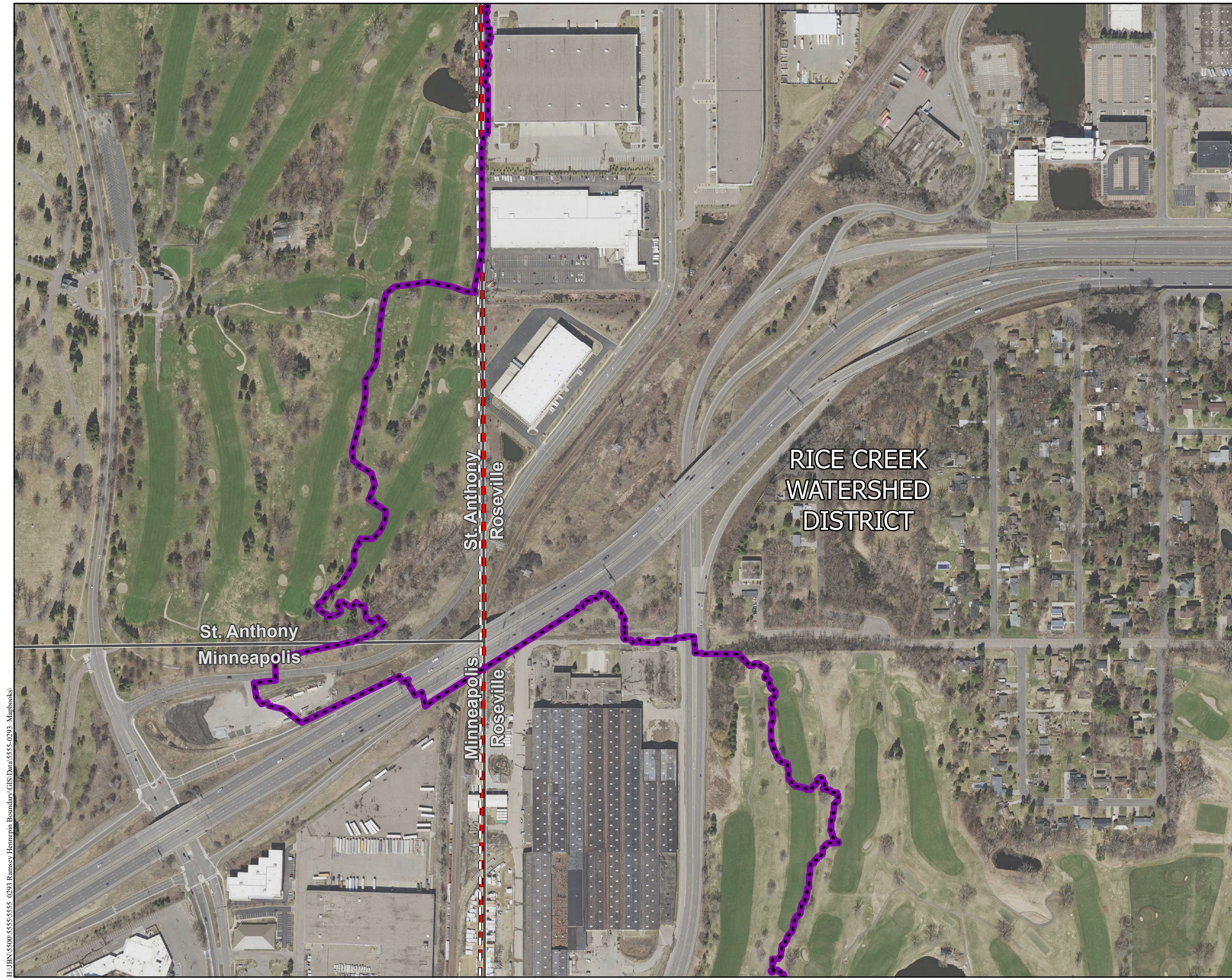
Legal Boundary Review

-  Areas Called Out in Memo
-  RCWD Hydrologic Boundary
-  Current RCWD Legal Boundary
-  Recommended RCWD Legal Boundary
-  City Boundaries
-  County Boundary



Legal Boundary Review - Page 8 of 41

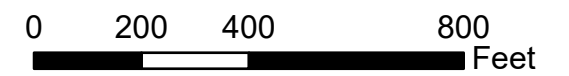
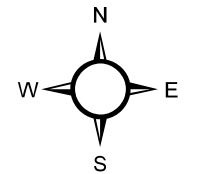
Scale: 1:4,290	Drawn by: KRB	Checked by: COO	Project No : 5555-0293	Date: 5/8/2024	Sheet: 8 of 41
-------------------	------------------	--------------------	---------------------------	-------------------	-------------------



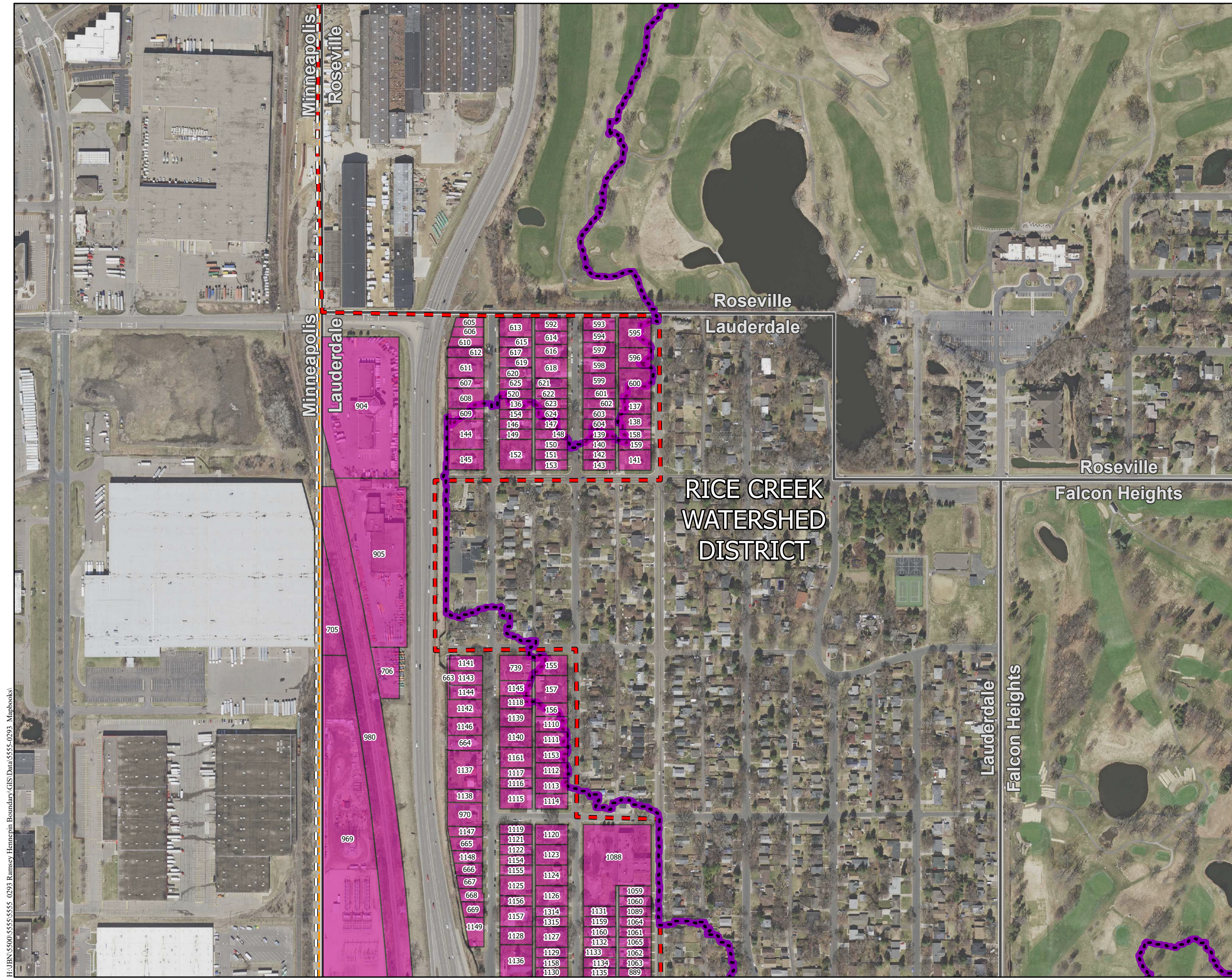
H:\JBN\5555\5555-0293_Ramsey_Hemepin_Boundary\GIS\Data\5555-0293_Mapbooks\

Legal Boundary Review

- Areas Called Out in Memo
- RCWD Hydrologic Boundary
- Current RCWD Legal Boundary
- Recommended RCWD Legal Boundary
- City Boundaries
- County Boundary
- New Watershed**
- MWMO

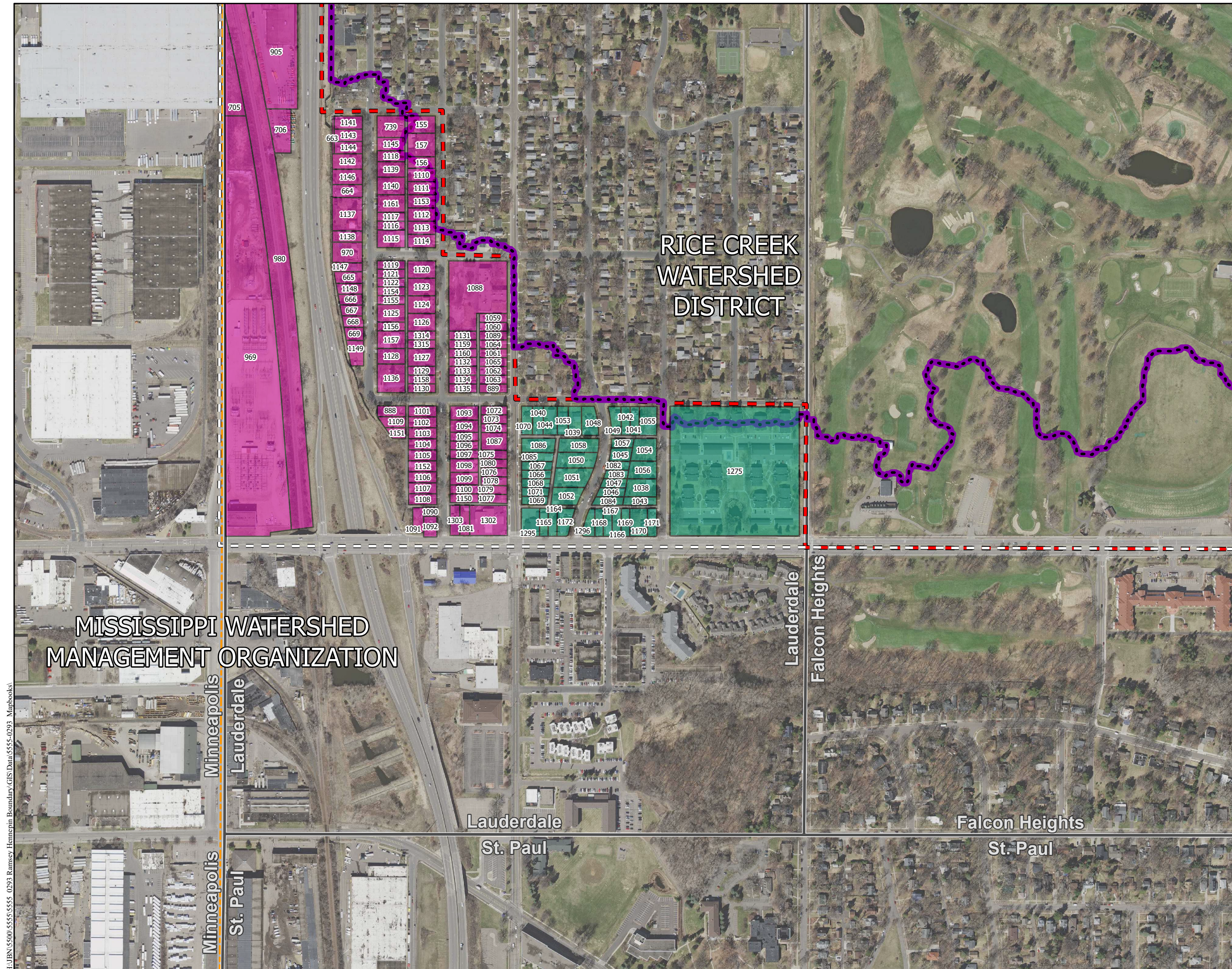


Legal Boundary Review - Page 9 of 41					
Scale: 1:4,290	Drawn by: KRB	Checked by: COO	Project No : 5555-0293	Date: 5/8/2024	Sheet: 9 of 41









H:\JRN\5500\5555\5555-0293 Ramsew Hennepin Boundary\GIS\Data\5555-0293 Mapbooks\



Legal Boundary Review

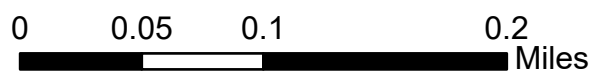
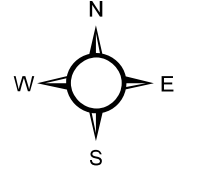


Legend

-  Areas Called Out in Memo
-  RCWD Hydrologic Boundary
-  Current RCWD Legal Boundary
-  Recommended RCWD Legal Boundary
-  City Boundaries
-  County Boundary

New Watershed

-  CRWD
-  MWMO



Legal Boundary Review Page 10 of 41

Scale: 1:5,000	Drawn by: KRB	Checked by: CCO	Project No : 5555-0293	Date: 5/8/2024	Sheet: 10 of 41
-------------------	------------------	--------------------	---------------------------	-------------------	--------------------

H:\JBN\5500\5555\5555 - 0293 Ramsew Hemeppin Boundary\GIS\Data\5555-0293 Mapbooks\







Legal Boundary Review

MISSISSIPPI
WATERSHED MANAGEMENT
ORGANIZATION

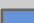

RICE CREEK
WATERSHED
DISTRICT

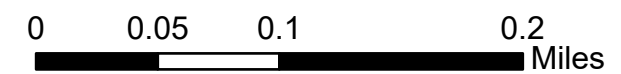
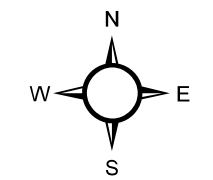
Roseville

Falcon Heights

-  Areas Called Out in Memo
-  RCWD Hydrologic Boundary
-  Current RCWD Legal Boundary
-  Recommended RCWD Legal Boundary
-  City Boundaries
-  County Boundary

New Watershed

-  RCWD
-  CRWD



Legal Boundary Review Page 11 of 41

Scale: 1:5,000	Drawn by: KRB	Checked by: CCO	Project No : 5555-0293	Date: 5/8/2024	Sheet: 11 of 41
-------------------	------------------	--------------------	---------------------------	-------------------	--------------------

H:\JBN\5500\5555\5555-0293_Ramsey_Hemepin_Boundary\GIS\Data\5555-0293_Mapbooks\



Protect it. Pass it on.

MISSISSIPPI
WATERSHED
MANAGEMENT
ORGANIZATION

2522 Marshall Street NE
Minneapolis, MN 55418

612-746-4970
contacts@mwwmo.org

www.mwwmo.org

July 9, 2024

Rice Creek Watershed District
ATTN: Nick Tomczik
4325 Pheasant Ridge Dr NE, Suite 611
Blaine, MN 55449

Re: Petition for Boundary Change, Rice Creek Watershed District: Letter of Concurrence

Dear Mr. Tomczik,

The Mississippi River Watershed Management Organization (MWWMO) has reviewed and considered the proposal to change the common boundary between the Rice Creek Watershed District and MWWMO. Pursuant to Resolution #6.1, the MWWMO Board of Commissioners authorized concurrence with the proposed petition to change the common boundary between the Rice Creek Watershed District and MWWMO.

Your point of contact regarding this concurrence is Administrator, Kevin Reich, of MWWMO, at (612) 746-4971, 2522 Marshall St NE, Minneapolis, MN 55418.

Sincerely,

Randy Stille,
Board Chair



MISSISSIPPI
WATERSHED
MANAGEMENT
ORGANIZATION

Request for Board Action

Attachment 6.2

Agenda Item: LOI re. Universal Plating Inc. site

Presenter: K. Reich

Meeting Date: 9 July 2024

Flexibility: Yes No

Estimated Time: Consent Agenda 10 Min. 15 Min. 30 Min. 45 Min. 1 Hour

Action Request: Information/Review Motion to approve Budget Change Other

Board Action: Approved Denied Tabled Accepted Report Other

Date of Action: 9 July 2024

Background

In response to flooding that severely impacted Edison High School and surrounding area in 1997, there was push for improved, better-coordinated stormwater management. These efforts ultimately spawned a “Northeast Green Campus Initiative.” Initial phases of the project incorporated many best practices and stormwater infrastructure. Also, Edison and Spark Y have integrated the stormwater BMPs into the school’s educational programming.

Additional aspects of the Green Campus Plan were not incorporated as they required additional land to the south—the former Universal Plating (UPI) site—owned by Hennepin County, which wasn’t available as pollution issues were being addressed. Last year, we applied for and received a State brownfield grant in an effort to revisit the status of the UPI site. Discussions about end uses that would meet the objectives of the County and MWMO and site partners Clare Housing, Spark Y, and MPS resulted in a provisional plan and an agreement with the County to transfer the land to the MWMO. The MWMO acquisition has allowed project opportunities to be refined and land use determined: MWMO has been the coordinating and pass-through public entity that seeks to

incorporate MWMO Mission-specific elements to the project site with no interest in ultimately owning the property. The Letter of Intent outlines the terms by which one of the identified end users, Clare Housing, agrees to maximize the energy efficiency of their building and fully integrate with the unified water systems of the Green Campus as public purpose terms for the potential nominally priced purchase option of one dollar. It is noted that these are the agreed conditions, but the LOI is not the final binding agreement; that approval will come forward to the Board assuming conditions have been met.

MWMO staff is requesting the Board to **approve and sign the Letter of Intent (Attachment 1) to transfer Clare Housing's proposed section of the Universal Plating Inc. site and their connection to the NE Green Campus extension.**

Mississippi Watershed Management Organization

RESOLUTION 2024-022

A RESOLUTION APPROVING THE TERMS OF THE LETTER OF INTENT WITH CLARE HOUSING REGARDING A PORTION OF THE FORMER UPI SITE

WHEREAS, the Mississippi Watershed Management Organization (MWMO) proposes to transfer certain real properties (“Property”) located at the former Universal Plating Inc. property (“UPI site”) at the N.W. corner of Monroe Street N.E. and 19th Avenue NE, Minneapolis, Minnesota.

WHEREAS, the MWMO is authorized by its joint powers agreement and applicable law to acquire and dispense with such real property as the purposes of the MWMO may require; and

WHEREAS, there is a recognized public purpose to exchange lands below market value rate to correct blighted conditions or develop affordable housing; and

WHEREAS, the terms outlined in the Letter of Understanding (LOI) are based on a public purpose standard that is below market value; and

WHEREAS, the MWMO staff and Clare Housing have agreed to the terms that have significant environmental and water management features incorporated into their project and integrated into the greater NE Green Campus in exchange for the purchase of the Property from MWMO for 1 dollar.

NOW THEREFORE BE IT RESOLVED, by the MWMO Board of Commissioners

1. The signing of the LOI is hereby authorized and approved subject to the terms of this resolution.

Review for the Board: _____

Randy Stille, Chair

Review for Administration: _____

Kevin Reich, Executive Director

**MISSISSIPPI WATERSHED
MANAGEMENT ORGANIZATION
AND CLARE HOUSING**

LETTER OF INTENT

July 1, 2024

RE: 661 19th Ave NE (PID 11-029-24-43-0121), 1900 Monroe St NE (PID 11-029-24-43-0119), Minneapolis, Minnesota

This letter shall serve as a Letter of Intent to purchase the above-referenced properties according to the following general terms and conditions:

1. **PARTIES:** Clare Housing, a Minnesota non-profit corporation or an affiliate thereof (“Purchaser”), as Purchaser and Mississippi Watershed Management Organization (“Seller”), as Seller.
2. **PROPERTY LOCATION:** 661 19th Ave NE; 1900 Monroe St NE, Minneapolis, Minnesota
3. **LEGAL DESCRIPTION:** Parcel ID Numbers: 11-029-24-43-0121, PID 11-029-24-43-0119, and described in Exhibit A, to be confirmed by current Survey with the depiction referenced in Exhibit B intended to be replated to accommodate the depiction and layout of Purchaser’s development.
4. **PROPERTY SIZE:** Approximately 28,978 square feet, to be confirmed by current Survey.
5. **PURCHASE PRICE:** One and No/100 Dollars (\$1.00) and other good and valuable consideration, with such nominal purchase price being in exchange for commitments by Purchaser to the following requirements: (A) a general maximizing of environmental efficiency of Purchaser’s building, and (B) a specific commitment to integrate Purchaser’s building water management into the broader Green Campus system. The requirements set forth in this Paragraph No. 5 are more fully set forth in Exhibit C which outlines and defines the requirements of (A) and (B) in more complete detail.
6. **EFFECTIVE DATE:** This Letter of Intent shall be effective upon signature and shall continue through the date of June 25, 2025.
7. **PURCHASE REQUIREMENTS:** The transaction contemplated by this Letter of Intent shall comply with all requirements and conditions of Minnesota Statutes and the Seller’s requirements. The Purchaser and Seller understand and intend that this Letter of Intent

shall lead to the execution of the Purchaser's standard Purchase Option and Development Agreement.

8. **TITLE INSURANCE/SURVEY/LEASES:** Within thirty (30) days of Seller's execution of the Purchase and Development Agreement, Seller shall provide the following, if any are in its the possession or control:
 - a. Existing abstracts or owner's title insurance policy reflecting Seller as named insured.
 - b. A recent certified survey of the Property reflecting all easements, restrictions, rights-of-way and reservations of record.
 - c. Any and all environmental information related to the property.
 - d. All current rent rolls and copies of all existing leases on the Property.
9. **INSPECTION PERIOD:** Purchaser shall have thirty (30) days ("the Inspection Period") from the completion of the Response Action Plan per the Voluntary Investigation and Cleanup (VIC) program requirements of the State to investigate the physical and environmental condition of the Property, evaluate the feasibility for the Purchaser's intended use, and related approvals and permits from all applicable governmental authorities ("Approvals") for Purchaser's proposed use of the Property ("Purchaser's Project") with a depiction of such project as set forth in Exhibit B. Purchaser shall have the right to extend the Inspection Period for one (1) additional ninety (90) day extension period (an "Inspection Period Extension"). Remediation work is scheduled for Spring of 2025
10. **CONTINGENCIES:** Seller acknowledges that Purchaser will seek the Approvals and funding for the Property during the Inspection Period. Purchaser agrees to use best efforts to obtain the Approvals and acquire the funding for the Property within said period and Seller shall cooperate in the signing of any applications, plats, etc., but at no cost to Seller.
11. **CLOSING CONTINGENCIES:**
 - a. Marketable, free and clear title to the Property and no restrictions that prohibits the Purchaser's Project.
 - b. The Property is free and clear of any environmental contaminants.
 - c. The Property is free and clear of any existing land or building leases, and no tenant is in possession of the Property.
 - d. The sale is contingent upon the need for Purchaser to acquire the Property for the Purchaser's Project.
 - e. The sale is contingent upon the Purchaser obtaining the financing required to develop its Project.
12. **CLOSING:** To occur thirty (30) days after expiration of the Inspection Period ("Closing Date"), as may be extended, or as soon thereafter as reasonably possible to allow for the preparation of papers and curing of any title defects Seller has elected to cure.

13. **COMMISSION:** The Seller has not engaged the services of a real estate broker. Buyer has engaged Eddie Landenberger of Assembly MN LLC and will pay his commission.
14. **CONTRACT NEGOTIATIONS:** Seller hereby grants Purchaser the exclusive right to purchase the subject Property upon the terms and conditions outlined herein and shall negotiate in good faith to finalize a Purchase Option and Development Agreement by June 25, 2025. Seller's template Purchase Option and Development Agreement will be used.

The parties, having executed this Letter of Intent, agree to be bound by the provisions set forth above.

ACCEPTED BY PURCHASER: Clare Housing

Signature

Name

_____, 2024.

Date

Signature

Name

_____, 2024.

Date

ACCEPTED BY SELLER: Mississippi Watershed Management Organization

Signature

Randy Stille, Chair _____
Name

_____, 2024.

Date

Signature

Kevin Reich, Executive Director _____
Name

_____, 2024.

Date

EXHIBIT A

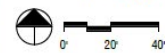
[Insert Legal Descriptions]

EXHIBIT B

Depiction of Project

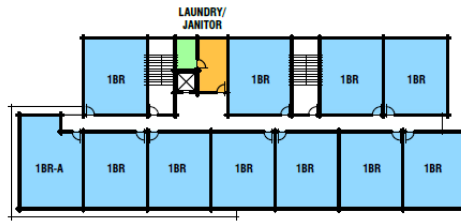


SITE PLAN
1" = 40'-0"



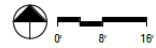
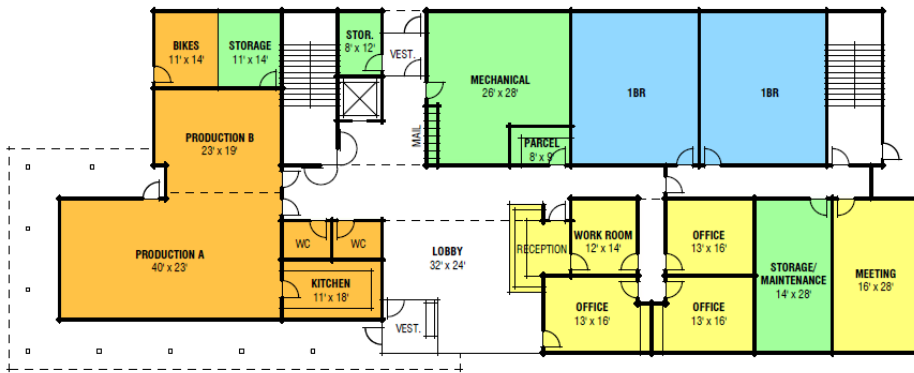
CLARE V
06-17-24





**SECOND THROUGH
FOURTH FLOORS**
1/32" = 1'-0"

9,015 g.s.f. PER FLOOR
11 1BR DWELLING UNITS PER FLOOR



FIRST FLOOR PLAN
1/16" = 1'-0"

8,350 g.s.f.
2 1BR DWELLING UNITS
PROJECT TOTAL:
35,395 g.s.f.
35 1BR DWELLING UNITS

CLARE V
05-17-24



EXHIBIT C

PURCHASER'S WATER MANAGEMENT REQUIREMENTS

Consistent with the MWMO's mission and objectives of the NE Green Campus the purchaser agrees to 1) build a highly energy efficient building with features that are recognized to provide measurable sustainability performance to meet environmental goals. Environmental standards and building components such as those found in Minnesota Housing Green Communities Criteria, Energy Star, LEED, Passive House (PHIUS) and Home Energy Rating System (HERS) can serve as criteria to assess the energy efficiency of the Buyer's project. 2) The Buyer agrees to work with the Seller and identify and implement a water management plan and system that demonstrate best management practices and coordinates with all neighboring properties on the NE Green Campus site (as referenced visually in exhibit A) as a unified district system or as separate water management components that are coordinated and complementary in achieving measurable goals.